



11 Coolabah Place Caringbah NSW

5 2 1

Rare and valuable opportunity to secure an original residence laden with endless possibilities. This potential-packed level 602sqm block approx. with a frontage of 18.898m provides the perfect blank canvas for those with a creative vision. Enjoying the benefits of a north facing rear aspect, this site is ready to play host to the next cutting edge architecturally designed dream home or duplex development (S.T.C.A.).

Families will adore this quiet cul de sac street, convenient to quality schools, parks, transport, local shops and cafes.

- Approximately 602sqm block with generous 18.898m frontage
- Currently consists of a spacious 5 bedroom family home
- 3 living areas, kitchen & original bathrooms, internal

Price : \$ 1,581,000

Land Size : 602 sqm

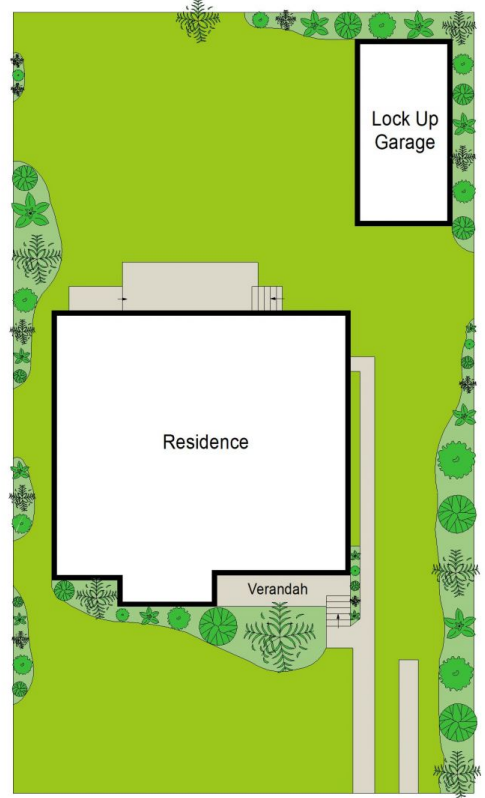
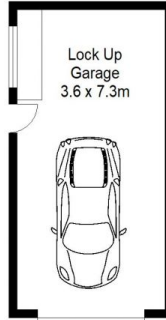
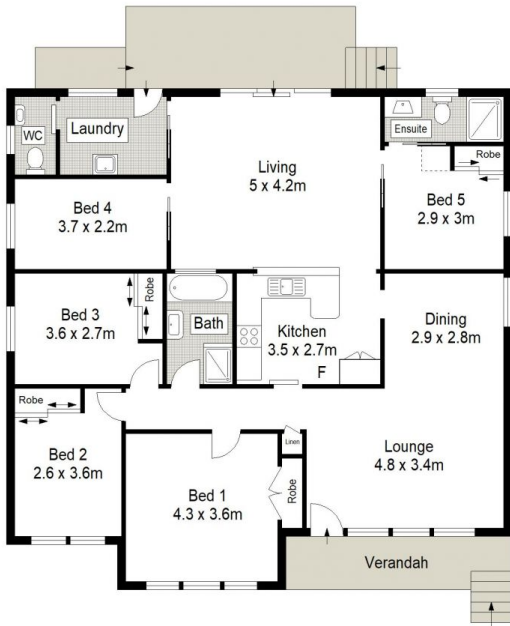
View : <https://www.gibsonpartners.com/sale/nsw/utherland/caringbah/residential/house/6410123>



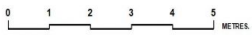
Ivan Lampret
02 9523 1333



Karla Madgwick
02 9523 1333



SITE PLAN (NOT TO SCALE)



Gibson Partners Real Estate Pty Ltd

Scale in metres. Indicative only. Dimensions are approximate. All information contained herein is gathered from sources we believe to be reliable. However we cannot guarantee its accuracy and interested persons should rely on their own enquiries.



11 Coolabah Place, Caringbah

GIBSON