



25 Caringbah Road Woolooware NSW

3 1 1

Set on a level 556sqm parcel of land with a sun-drenched northerly rear aspect, this much-loved single level home presents the perfect opportunity for downsizers, young families or the keen renovator looking to enter the market with the foresight to potentially extend or even rebuild at their leisure (S.T.C.A).

Land Size : 556 sqm
View : <https://www.gibsonpartners.com/sale/nsw/utherland/wooloware/residential/house/6410214>

Immediately liveable and boasting immaculate light filled interiors, this home also offers 2 separate living areas and a secure well-maintained level yard ideal for the kids to play or entertaining family and friends. Enjoy the convenience of Cronulla beaches, cafes, local schooling and sporting facilities nearby as well.

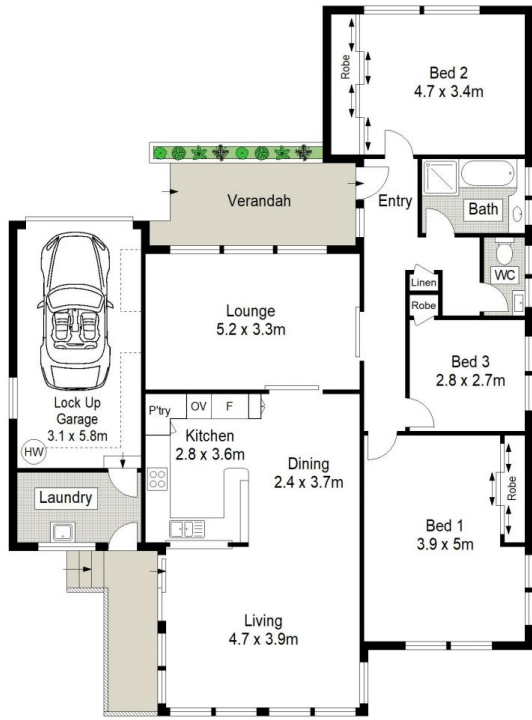
- Easy single level living in family friendly neighbourhood
- Solid timber kitchen with servery, 2 separate living areas



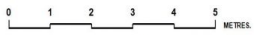
Ivan Lampret
02 9523 1333



Karla Madgwick
02 9523 1333



SITE PLAN (NOT TO SCALE)



Gibson Partners Real Estate Pty Ltd

Scale in metres. Indicative only. Dimensions are approximate. All information contained herein is gathered from sources we believe to be reliable. However we cannot guarantee its accuracy and interested persons should rely on their own enquiries.



25 Caringbah Road, Woollooware

GIBSON