



15 Lynch Avenue Caringbah South NSW

5 4 4

Set on a generous 746.1sqm parcel of land this charming home offers well-maintained interiors yet still has potential to add your own personal touch or a complete rebuild of your dream home (STCA).

With it's practical and versatile floor plan the home provides a wealth of features including generous accommodation, multiple living areas, fantastic yard ideal for the kids along with a huge in-ground swimming pool. Perfect for growing families demanding space in a sought-after area with local schools, shops and transport just metres away.

- Five bedrooms, BIR's, master with walk-in robe & luxury ensuite
- Formal living & dining room + family room & casual dining area

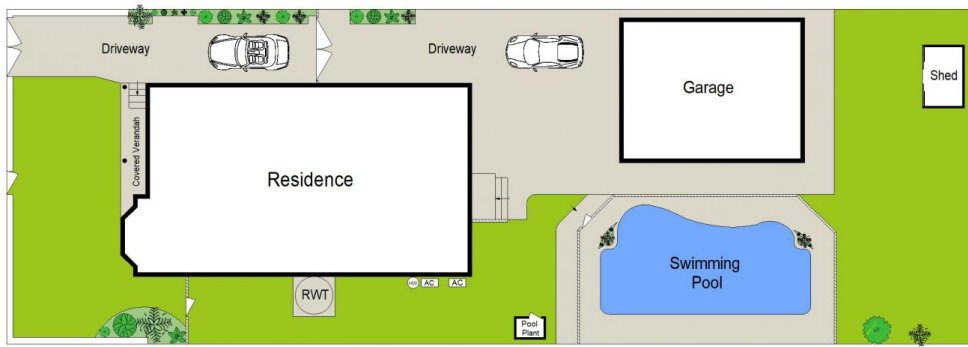
Price : \$ 2,400,000
Land Size : 746.1 sqm
View : <https://www.gibsonpartners.com/sale/nsw/sutherland/caringbah-south/residential/house/6445652>



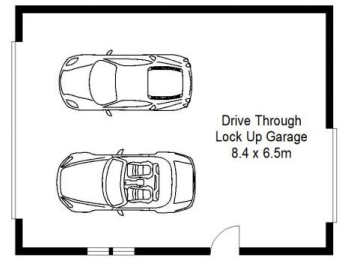
Ivan Lampret
02 9523 1333



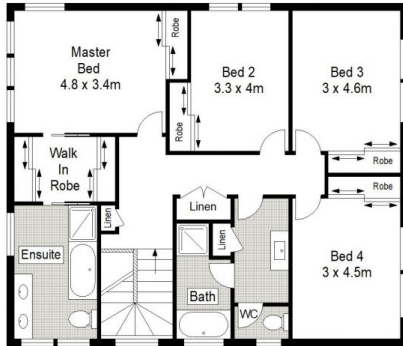
John Young
02 9523 1333



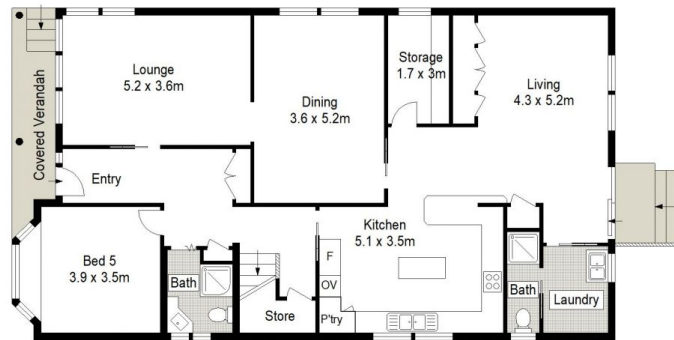
SITE PLAN (NOT TO SCALE)



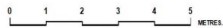
GROUND FLOOR



FIRST FLOOR



GROUND FLOOR



Gibson Partners Real Estate Pty Ltd

Scale in metres. Indicative only. Dimensions are approximate. All information contained herein is gathered from sources we believe to be reliable. However we cannot guarantee its accuracy and interested persons should rely on their own enquiries.



15 Lynch Avenue, Caringbah South

GIBSON