



84 Nicholson Parade Cronulla NSW

6 3 4

Boasting a commanding corner position in a premium beachside locale, this spacious family home is the embodiment of classic solid double brick and concrete construction. Offered for the first time in 40 years and spanning two expansive levels this much-loved residence is the perfect fit for a large family offering abundant accommodation, a versatile choice of entertaining areas, inground pool, picturesque district views and Gunnamatta Bay glimpses.

Impressively scaled with scope to personalise and further benefit from its current design, ideal aspect and enviable location within just 550m (approx.) to Gunnamatta Bay and convenient to local beaches, cafes, restaurants, schools and transport.

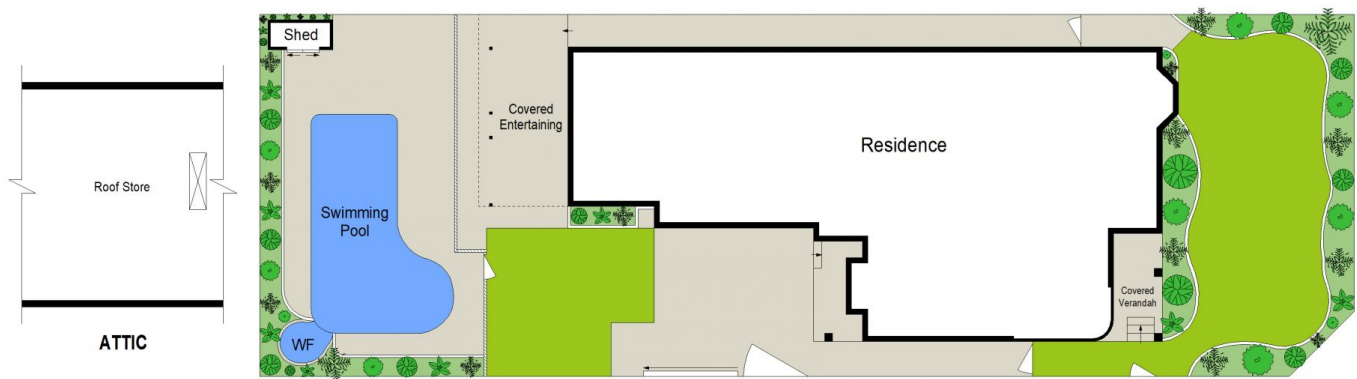
Price : \$ 3,100,000
Land Size : 537.5 sqm
View : <https://www.gibsonpartners.com/sale/nsw/sutherland/cronulla/residential/house/6446291>



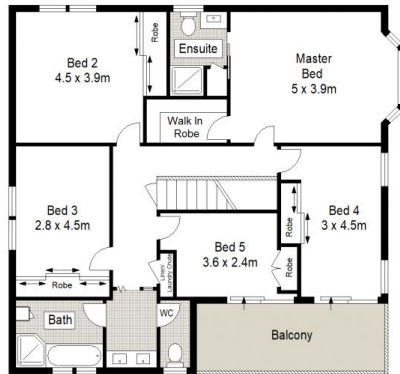
Ivan Lampret
02 9523 1333



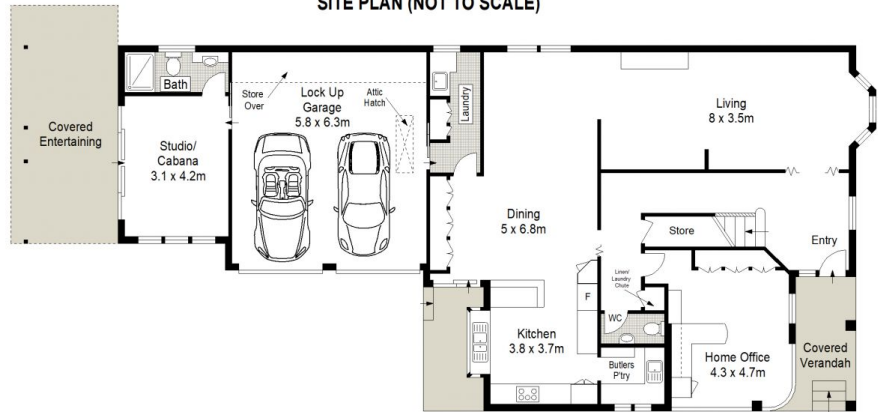
Karla Madgwick
02 9523 1333



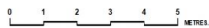
SITE PLAN (NOT TO SCALE)



FIRST FLOOR



GROUND FLOOR



Gibson Partners Real Estate Pty Ltd

Scale in metres. Indicative only. Dimensions are approximate. All information contained herein is gathered from sources we believe to be reliable. However we cannot guarantee its accuracy and interested persons should rely on their own enquiries.

84 Nicholson Parade, Cronulla South

GIBSON