



11 Third Avenue Gymea Bay NSW

4 2 4

This expansive single level home set on a sun-soaked 834.7sqm parcel of land offers more than enough space inside and out for unlimited family living - stylish, practical and the perfect entertainer.

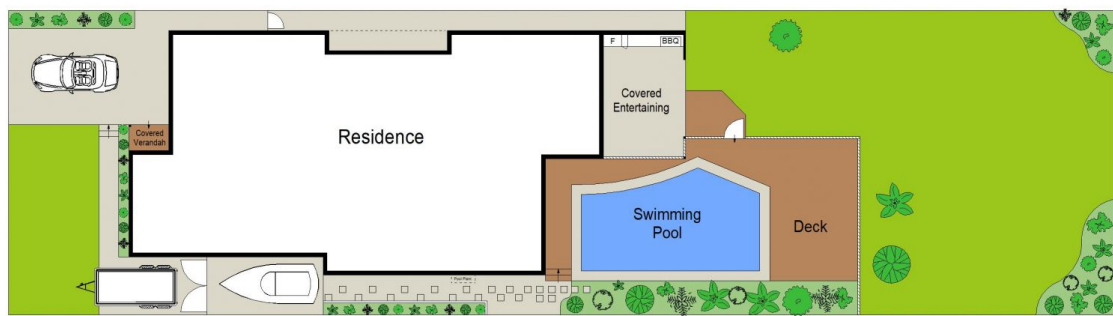
Enjoying easy flow interiors brimming with many features throughout and complimented by a combination of rich timber flooring and neutral tones, this home is sure to impress those buyers looking for the perfect family retreat whilst convenient to all that Gymea Bay has to offer.

- Light-filled family living & dining room + 2nd living room with study nook
- Stunning hostess kitchen with oversized island bench & loads of storage
- Four bedrooms, BIR's, master with stylish ensuite &

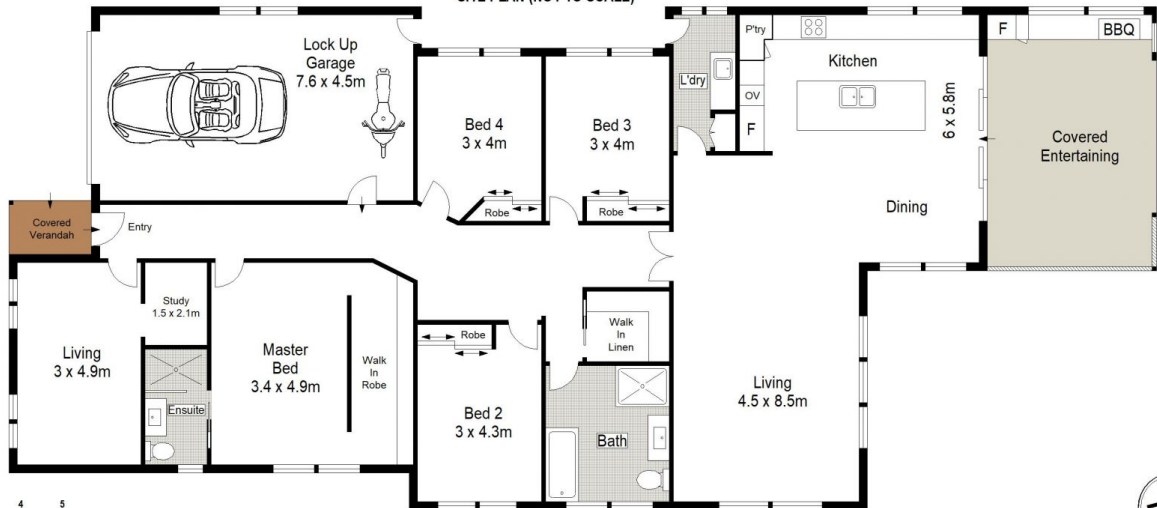
Price : \$ 2,415,000
Land Size : 834.7 sqm
View : <https://www.gibsonpartners.com/sale/nsw/sutherland/gymea-bay/residential/house/6470933>



Chris Walsh
02 9523 1333



SITE PLAN (NOT TO SCALE)



Gibson Partners Real Estate Pty Ltd

Scale in metres. Indicative only. Dimensions are approximate. All information contained herein is gathered from sources we believe to be reliable. However we cannot guarantee its accuracy and interested persons should rely on their own enquiries.

11 Third Avenue, Gymea Bay



GIBSON