

3/1 Trickett Road Woollooware NSW

2 1 1

Impressive upon entry, this stylish two bedroom apartment basking in a sunny north-easterly aspect enjoys an elevated first floor position with a delightful terrace garden setting and a lush leafy outlook.

View : <https://www.gibsonpartners.com/sale/nsw/sutherland/woollooware/residential/apartment/6491928>

Featuring tasteful enhancements throughout and a free-flowing design, this apartment is perfect for those buyers looking to take advantage of this great lifestyle location convenient to Woollooware station, Cronulla beaches, cafes, specialty shops and popular restaurants.

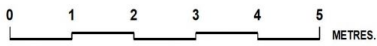
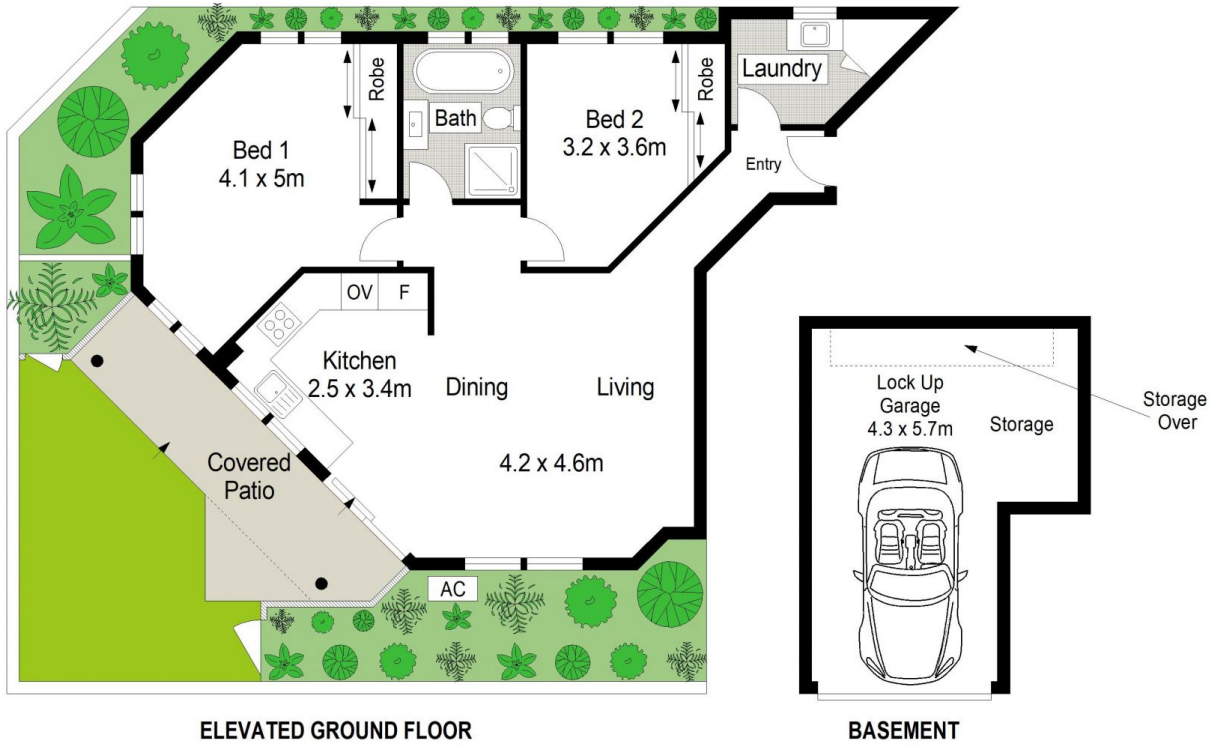


Ivan Lampret
02 9523 1333



Farrah Tidmarsh
02 9523 1333

- Located in a beautifully presented boutique complex of only 7
- Generous open-plan living & dining rooms bathed in natural light
- Chic kitchen enhanced with sleek cabinetry & s/steel



Gibson Partners Real Estate Pty Ltd

Scale in metres. Indicative only. Dimensions are approximate. All information contained herein is gathered from sources we believe to be reliable. However we cannot guarantee its accuracy and interested persons should rely on their own enquiries.



3/1 Trickett Road, Woollooware

GIBSON