



1E/83 Gerrale Street Cronulla NSW

3 2 1

Occupying the prime northern corner position in the prestigious 'Ballantyne' building, this first floor apartment relishes in open plan light filled interiors with views towards both Cronulla Beach and Munro Park. Boasting a generous floorplan of 3 bedrooms, 2 bathrooms, spacious lounge and dining areas that spill out onto two balconies and lift access from the secure basement parking, this unique offering also provides the opportunity to add your own personal touch and further benefit from its spacious floorplan, ideal aspect and pleasant outlook.

Superbly located in the heart of Cronulla directly opposite Cronulla Beach and central to Cronulla Mall and its array of shops, cafes, restaurants, train station, this rare offering promises a lifestyle of absolute convenience and coastal bliss.

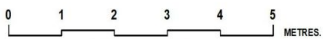
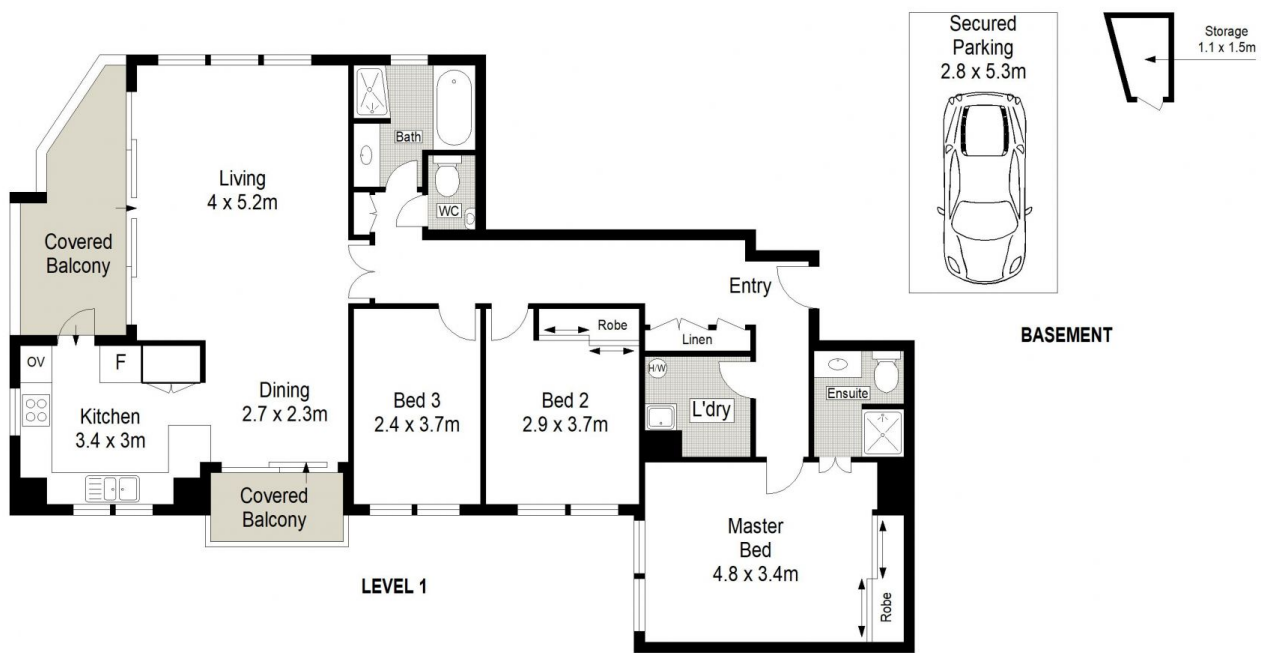
View : <https://www.gibsonpartners.com/sale/nsw/sutherland/cronulla/residential/apartment/6529578>



Ivan Lampret
02 9523 1333



Karla Madgwick
02 9523 1333



Gibson Partners Real Estate Pty Ltd

Scale in metres. Indicative only. Dimensions are approximate. All information contained herein is gathered from sources we believe to be reliable. However we cannot guarantee its accuracy and interested persons should rely on their own enquiries.



1E/83 Gerrale Street, Cronulla

GIBSON