



40/360 Kingsway Caringbah NSW

2 1 1

Situated on level 6 of Catalina Apartments, this modern 2 bedroom apartment presents an excellent opportunity for investors, downsizers or first home buyers alike. Boasting a desirable northerly aspect, light filled interior and access to an array of resort style facilities such as a heated indoor pool, spa, sauna, gymnasium, BBQ area, lift access and 24/7 security.

Positioned in the hub of Caringbah CBD, the convenience to shops, cafes, restaurants and transport is second to none.

- Level 6 of the Catalina Apartments with lift access
- Open plan kitchen with stainless steel appliances (gas)
- Combined lounge/dining, sunny north facing balcony
- 2 well sized bedrooms both with built-in wardrobes

Price : \$ 665,000

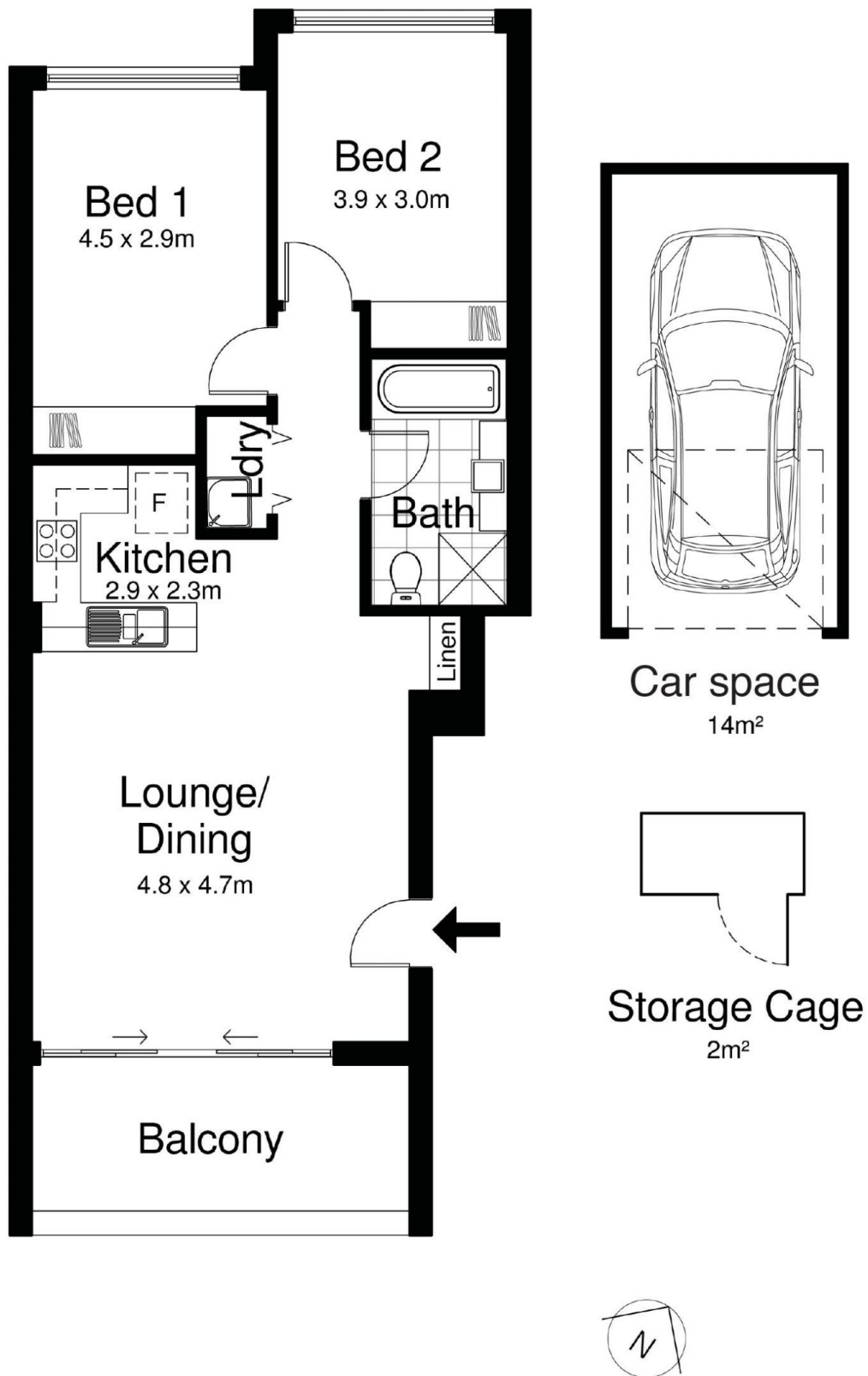
View : <https://www.gibsonpartners.com/sale/nsw/sutherland/caringbah/residential/apartment/6592088>



Ivan Lampret
02 9523 1333



Karla Madgwick
02 9523 1333



40/360 Kingsway, CARINGBAH

DISCLAIMER: All care has been taken in preparing this floorplan, however the accuracy is not guaranteed and no liability will be accepted for any reliance placed upon it
Produced by PRODUCT PHOTOGRAPHY STUDIO mob: 0414 697 215 email: mgphoto@people.net.au