



7A Alfred Avenue Cronulla NSW

4 3 2

Boasting an impressive façade and even more stunning from within, this architecturally designed, seaside inspired home displays expert craftsmanship of unmatched design and quality. No expense spared and every detail thoroughly considered. As you enter the home you feel an immediate sense of calm resulting from the carefully selected materials of engineered Oak flooring, panel feature walls, soaring ceilings, tall glass sliders allowing natural ventilation and capturing the essence of in/outdoor living.

Embracing an easy low maintenance coastal lifestyle, this exquisite family home enjoys a blue-chip Cronulla location within just a 950m (approx.) walk to the beach and well served by an array of local amenities consisting of local schools, Cronulla golf course, shops, restaurants and transport.

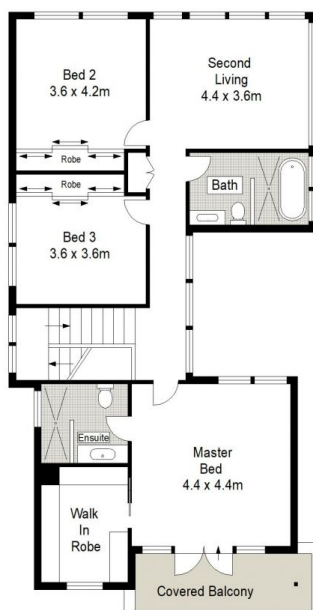
Land Size : 307.6 sqm
View : <https://www.gibsonpartners.com/sale/nsw/sutherland/cronulla/residential/house/6643149>



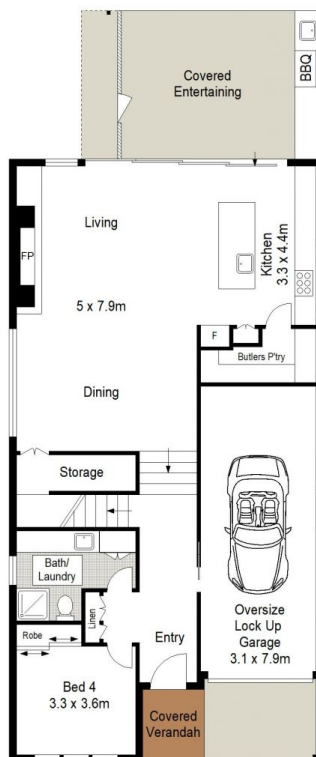
Ivan Lampret
02 9523 1333



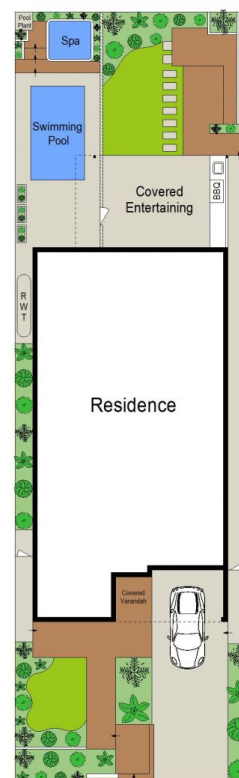
Karla Madgwick
02 9523 1333



FIRST FLOOR



GROUND FLOOR



SITE PLAN (NOT TO SCALE)



Gibson Partners Real Estate Pty Ltd

Scale in metres. Indicative only. Dimensions are approximate. All information contained herein is gathered from sources we believe to be reliable. However we cannot guarantee its accuracy and interested persons should rely on their own enquiries.

7a Alfred Avenue, Cronulla



GIBSON