



4/35 Denman Avenue Woollooware NSW

1 1

Positioned at the back of a boutique block of only eight residences, this freshly painted ground floor apartment offers a sunny northeast aspect, wonderfully light filled interiors and further scope to improve or personalise.

Price : \$ 530,000

View : <https://www.gibsonpartners.com/sale/nsw/sutherland/woollooware/residential/apartment/6648765>

The convenience of residing within approximately 50m to Woollooware Train Station, 250m to Wills Rd Village shops, cafes, schools and the accessibility to Cronulla's beaches, will provide immediate appeal to first home buyers, downsizers, or investors seeking a perfect opportunity to grow their portfolio.

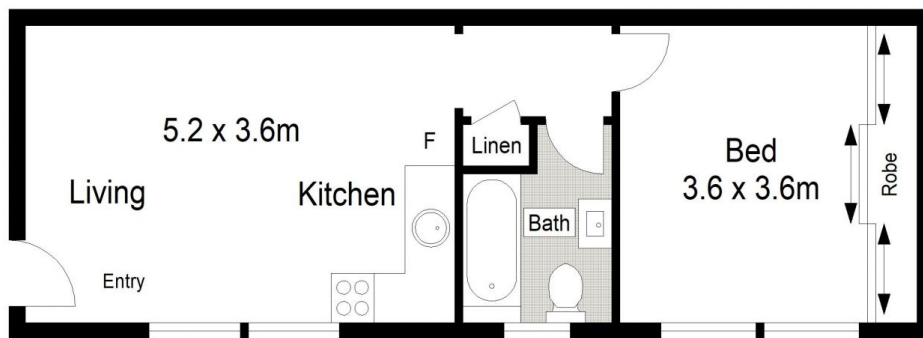


Ivan Lampret
02 9523 1333

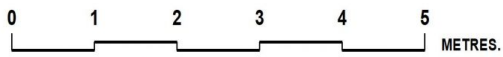


Michelle West
02 9523 1333

- Ground floor apartment at the back of a boutique block
- Light filled open plan living and kitchen with high ceilings
- King sized bedroom enjoys a sunny northerly aspect
- Polished timber floorboards, freshly painted throughout



GROUND FLOOR



Gibson Partners Real Estate Pty Ltd

Scale in metres. Indicative only. Dimensions are approximate. All information contained herein is gathered from sources we believe to be reliable. However we cannot guarantee its accuracy and interested persons should rely on their own enquiries.



4/35 Denman Avenue, Woollooware

GIBSON