



16B Saunders Bay Road Caringbah South NSW

4 2 2

Striking from the outside, stunning from within; this contemporary home designed by Vic Lake Architect combines state-of-the-art interiors with premium appointments and bespoke features across two opulent levels. Boasting quality engineered oak timber flooring, it has been expertly crafted to take full advantage of its desirable north-westerly orientation with the sleek interior visually enhanced by the soaring ceilings, floor to ceiling glass doors and seamless indoor/outdoor integration.

Positioned to enjoy a vast selection of lifestyle activities with local marinas, stunning waterways, Cronulla beaches, schools, shops, cafes and transport all nearby.

- Designed by Vic Lake Architect, spacious interiors, quality inclusions

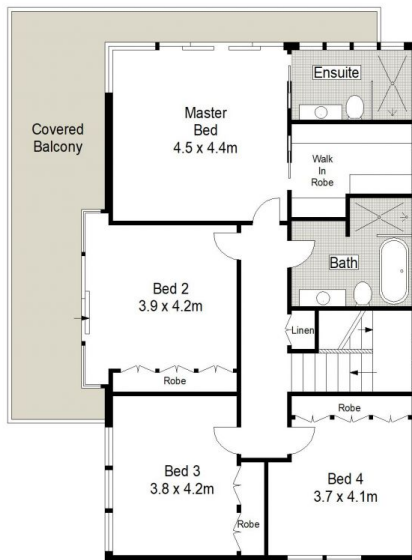
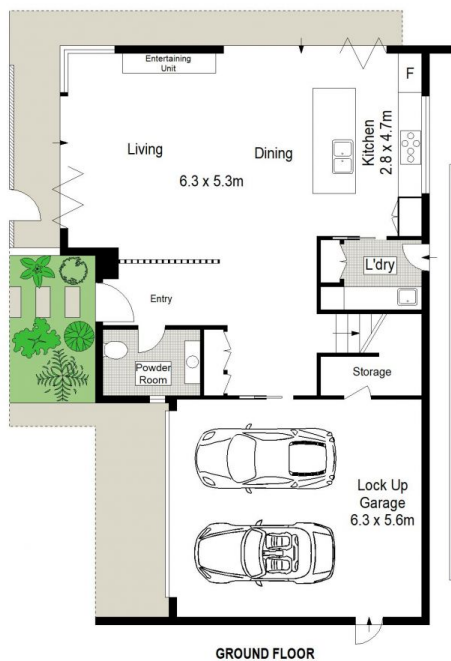
**Price** : \$ 2,715,000  
**Land Size** : 404.6 sqm  
**View** : <https://www.gibsonpartners.com/sale/nsw/sutherland/caringbah-south/residential/house/6736154>



**Ivan Lampret**  
02 9523 1333



**Farrah Tidmarsh**  
02 9523 1333



0 1 2 3 4 5 METRES.

Gibson Partners Real Estate Pty Ltd

Scale in metres. Indicative only. Dimensions are approximate. All information contained herein is gathered from sources we believe to be reliable. However we cannot guarantee its accuracy and interested persons should rely on their own enquiries.



16B Saunders Bay Road, Caringbah South

**GIBSON**