



8B Willarong Road Caringbah NSW

5 3 2

A welcoming haven of impeccable style and sophistication, this brand new architectural Duplex with a hint of Hamptons is spread over two unique oversized levels combining cutting-edge design with meticulous craftsmanship and superior appointments throughout. Emphasizing family functionality, the house-like proportions, choice of versatile light filled living spaces and seamless integration outdoors is nothing less than extraordinary.

Centrally located in Caringbah North providing easy access to local primary & secondary schools, sporting fields, Caringbah Super Centre and bus to rail city link makes this home an attractive proposition for families seeking unmatched lifestyle of quality, space and convenience.

- Expansive flowing floor plan, multiple living areas,

Land Size : 325.2 sqm
View : <https://www.gibsonpartners.com/sale/nsw/sutherland/caringbah/residential/semi-detached/6753480>



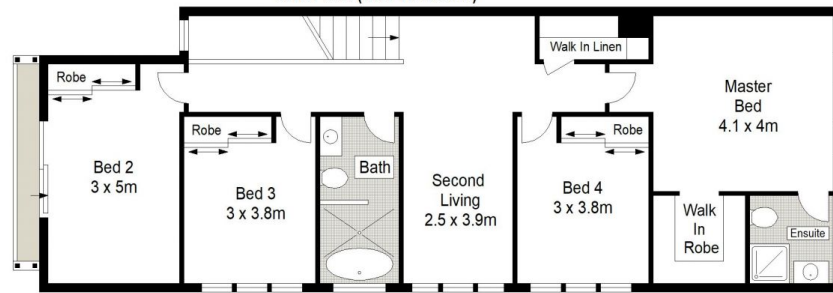
Ivan Lampret
02 9523 1333



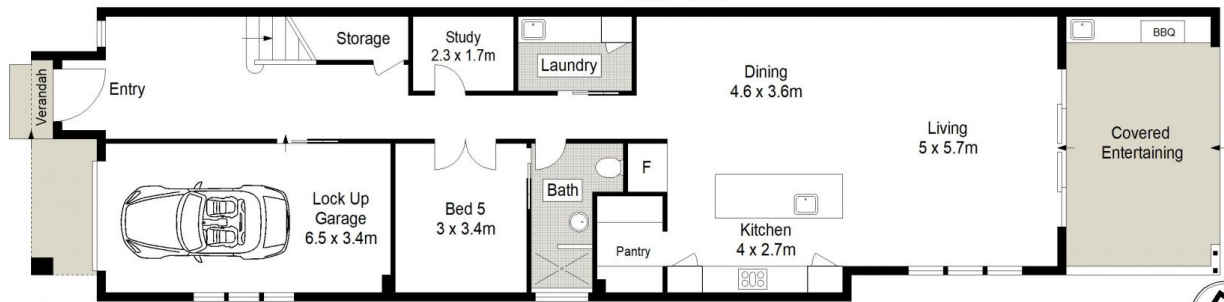
Farrah Tidmarsh
02 9523 1333



SITE PLAN (NOT TO SCALE)



FIRST FLOOR



GROUND FLOOR

0 1 2 3 4 5 METRES.

Gibson Partners Real Estate Pty Ltd

Scale in metres. Indicative only. Dimensions are approximate. All information contained herein is gathered from sources we believe to be reliable. However we cannot guarantee its accuracy and interested persons should rely on their own enquiries.

8B Willarong Road, Caringbah

GIBSON