



## 43B Crammond Boulevard Caringbah NSW

5 3 2

This architecturally designed duplex proudly built by local builder Lloyds, offers sleek sophisticated interiors spanning two impressive levels and a versatile floorplan that integrates smoothly with the outdoors creating the perfect home for luxury family living and entertaining all year round.

With a grand entry foyer that allows an easy transition to both levels offering a great selection of dedicated living, dining and accommodation options to suit an array of family dynamics. Located in a great Caringbah locale the home is convenient to a gateway of endless amenities on offer.

- A split level design steps down to a light-filled open-plan living & dining area
- Five bedrooms fitted with BIR's, master with luxury

**Land Size** : 322.9 sqm

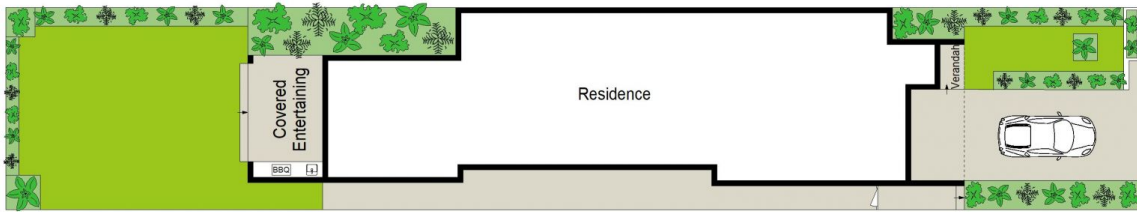
**View** : <https://www.gibsonpartners.com/sale/nsw/sutherland/caringbah/residential/semi-detached/6818455>



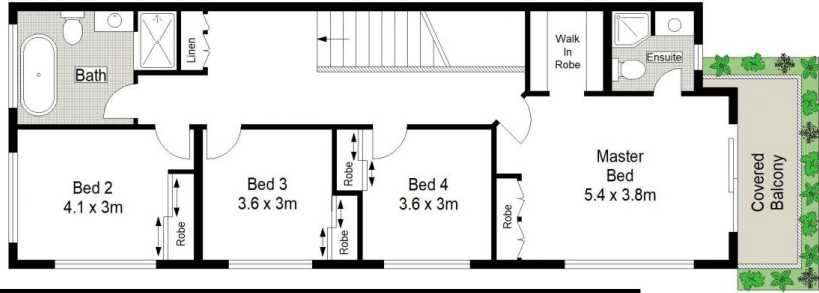
**Ivan Lampret**  
02 9523 1333



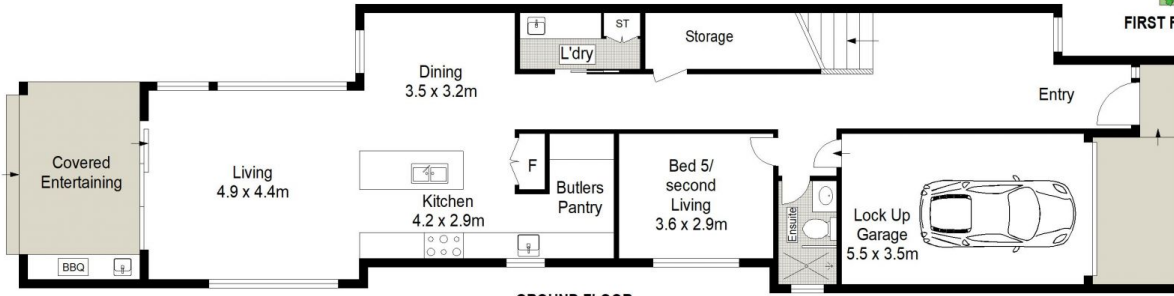
**John Young**  
02 9523 1333



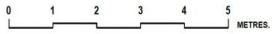
SITE PLAN (NOT TO SCALE)



FIRST FLOOR



GROUND FLOOR



Gibson Partners Real Estate Pty Ltd

Scale in metres. Indicative only. Dimensions are approximate. All information contained herein is gathered from sources we believe to be reliable. However we cannot guarantee its accuracy and interested persons should rely on their own enquiries.



43b Crammond Boulevard, Caringbah

**GIBSON**