



17D Hill Street Woolooware NSW

4 3 2

Designed by Vic Lake Architect, you must step inside to fully appreciate this unique Torrens Title duplex that combines state-of-the-art interiors with premium appointments across two opulent levels. Defined by expert craftsmanship and soaring ceilings and abundant storage throughout, generously scaled interiors offer an open plan entertaining experience with a pool and private garden backdrop.

A unique corner position framed by manicured hedges enhances the privacy of this picture-perfect abode convenient to Burraneer village shops, De La Salle College, Woolooware train station and within an easy walk to Cronulla's cafes and beaches.

- Designed by Vic Lake Architect, premium appointments

Land Size : 313.3 sqm

View : <https://www.gibsonpartners.com/sale/nsw/sutherland/woolooware/residential/semi-detached/6907567>



Ivan Lampret
02 9523 1333



Karla Madgwick
02 9523 1333

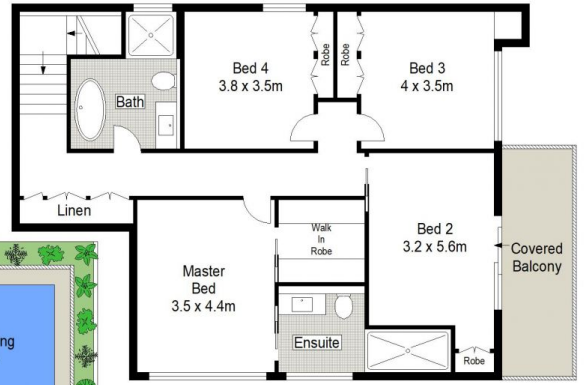


0 1 2 3 4 5 METRES.

GROUND FLOOR

Gibson Partners Real Estate Pty Ltd

Scale in metres. Indicative only. Dimensions are approximate. All information contained herein is gathered from sources we believe to be reliable. However we cannot guarantee its accuracy and interested persons should rely on their own enquiries.



FIRST FLOOR

17d Hill Street, Woollooware

GIBSON