



5/22 Coast Avenue Cronulla NSW

3 2 1

Situated in a cul-de-sac setting right on The Esplanade of the well-maintained 'Knobbys' apartment complex, this stunning waterfront apartment occupying a spacious 2nd floor position is bathed in natural light and captures breathtaking ocean views from every room.

Price : \$ 1,700,000

View : <https://www.gibsonpartners.com/sale/nsw/sutherland/cronulla/residential/apartment/6941695>

Complete with lift access and never to be built-out views, this well positioned apartment is just footsteps to Shelly Park, beach and only minutes away from Cronulla's cafes, shops, and transport. Leave the car keys behind and immerse yourself in the ultra-convenient location and endless array of activities at your doorstep.

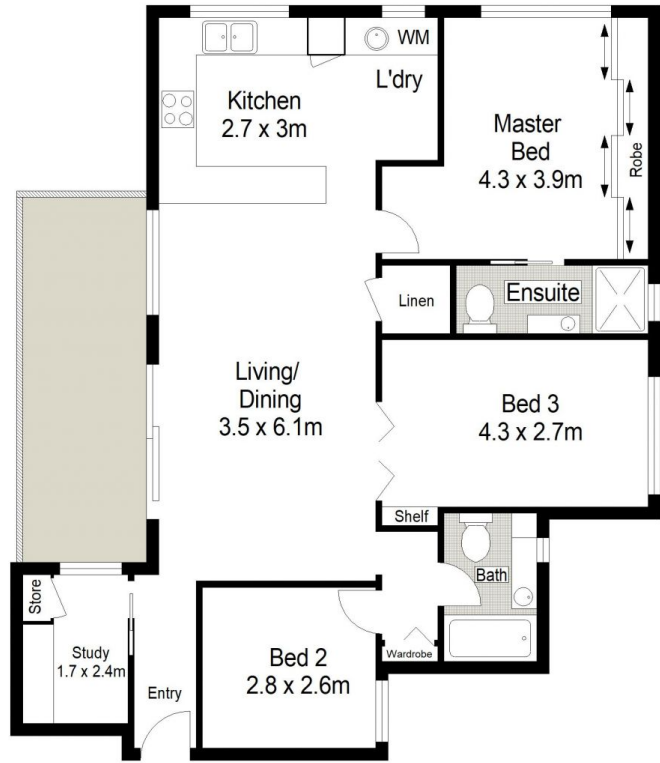
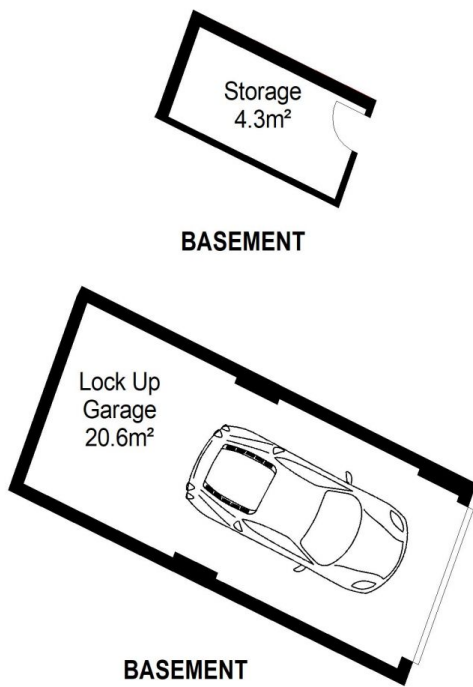
- Open-plan design with light-filled interiors from a north-westerly aspect
- Entertainers kitchen with oversized breakfast bar &



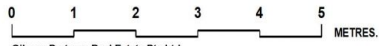
Ivan Lampret
02 9523 1333



Karla Madgwick
02 9523 1333



LEVEL 2



Gibson Partners Real Estate Pty Ltd



Scale in metres. Indicative only. Dimensions are approximate. All information contained herein is gathered from sources we believe to be reliable. However we cannot guarantee its accuracy and interested persons should rely on their own enquiries.



5/22 Coast Avenue, Cronulla

GIBSON