

## 169 Kingsway Woollooware NSW

4 2 2

Sitting on a 573.8sqm (approx.) block that bathes in a prime north-to-rear aspect, this brick dual level home is ready for you to move in and immediately enjoy the comforts and versatile living spaces whilst you contemplate your vision and plans for the future.

**Land Size** : 573.8 sqm  
**View** : <https://www.gibsonpartners.com/sale/nsw/sutherland/woollooware/residential/house/6961049>

Presenting excellent value and holding immense appeal for those looking for a solid foundation to raise a family close to excellent local schools, transport and within minutes to Cronulla's shops, restaurants and beachside lifestyle.

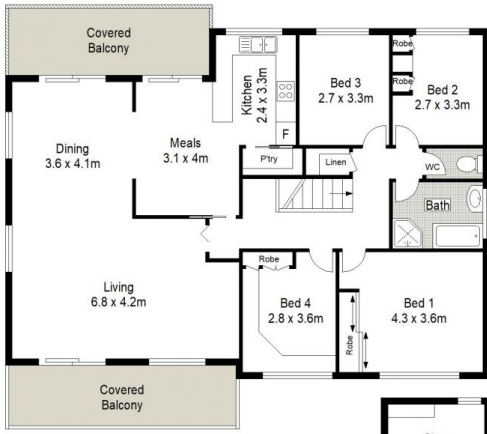
- North-to-rear aspect floods the home in natural sunlight
- Spacious lounge dining flows to a choice of 2 balconies
- Neat kitchen with walk-in pantry and adjoining meals area
- 4 bedrooms, 2 with BIRs, family bathroom with separate toilet



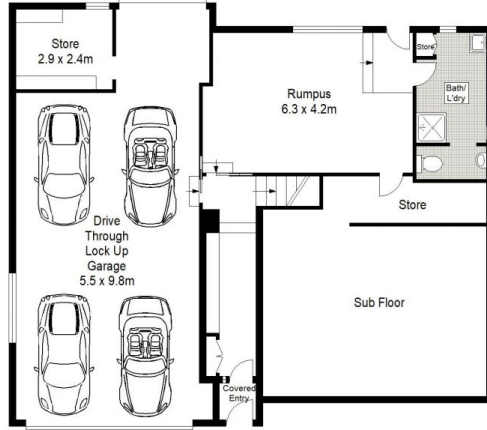
**Ivan Lampret**  
02 9523 1333



**Karla Madgwick**  
02 9523 1333



FIRST FLOOR



GROUND FLOOR



SITE PLAN (NOT TO SCALE)

0 1 2 3 4 5 METRES

Gibson Partners Real Estate Pty Ltd



Scale in metres. Indicative only. Dimensions are approximate. All information contained herein is gathered from sources we believe to be reliable. However we cannot guarantee its accuracy and interested persons should rely on their own enquiries.



169 Kingsway, Woollooware

**GIBSON**