



6B Willarong Road Caringbah NSW

5 3 2

High-end style and contemporary luxury define this brand new stunning architectural designed duplex where superior finishes, size and exceptional quality combine to create a superb lifestyle home. Emphasizing family functionality, the house-like proportions offer a hint of Hamptons while the versatile light filled living spaces and seamless integration outdoors is nothing less than extraordinary.

Centrally located in Caringbah North providing easy access to local primary & secondary schools, sporting fields, Caringbah Super Centre and bus to rail city link makes this home an attractive proposition for families seeking unmatched lifestyle of quality, space and convenience.

- Architecturally designed to maximise light and space throughout

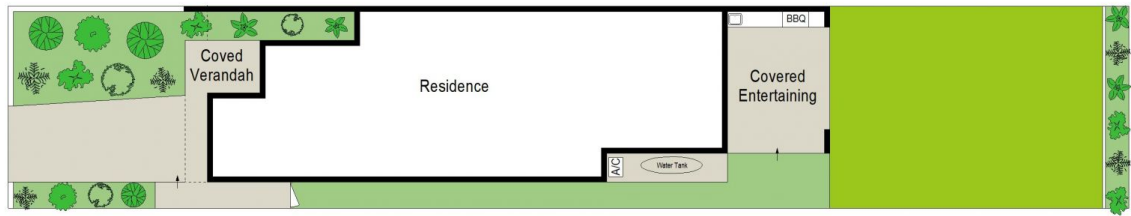
Land Size : 325 sqm
View : <https://www.gibsonpartners.com/sale/nsw/sutherland/caringbah/residential/semi-detached/7025868>



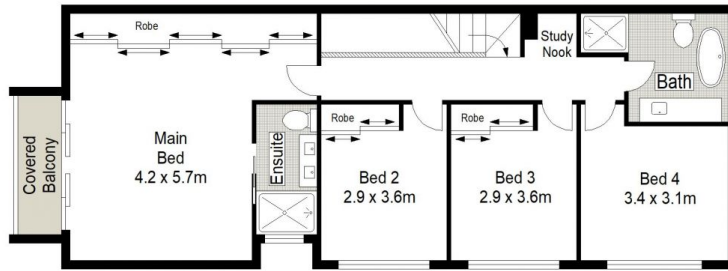
Ivan Lampret
02 9523 1333



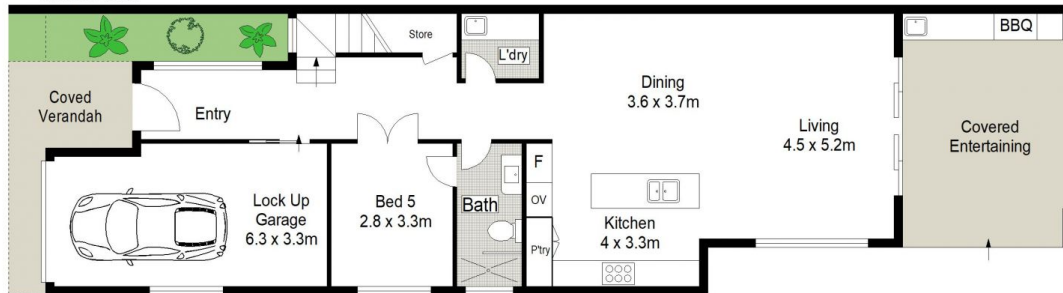
Farrah Tidmarsh
02 9523 1333



SITE PLAN (NOT TO SCALE)



FIRST FLOOR



GROUND FLOOR

0 1 2 3 4 5 METRES.

Gibson Partners Real Estate Pty Ltd



Scale in metres. Indicative only. Dimensions are approximate. All information contained herein is gathered from sources we believe to be reliable. However, we cannot guarantee its accuracy and interested persons should rely on their own enquiries.



6 Willarong Road, Caringbah

GIBSON