



50 Dominic Street Burraneer NSW

4 2 2

Boasting elevated views over Burraneer Bay and offered for the first time in over 26 years, this fashionable retro gem presents an accomplished sense of style, sophistication and future vision. Spread over three levels and flooded in natural light, offering an impressive retreat on the upper level, separate self-contained accommodation ideal for guests or teenagers and rolling rear yard complete with outdoor entertaining spa and fire pit.

Situated in a tightly-held street on a north facing block of approx. 556sqm and overflowing with potential, a new owner could preserve the home's current look, subject it to a complete renovation, or build their own architecturally designed dream home (STCA). But whatever changes happen to the home - the beauty of the Bay and convenience to local schools, parks, shops, cafes and

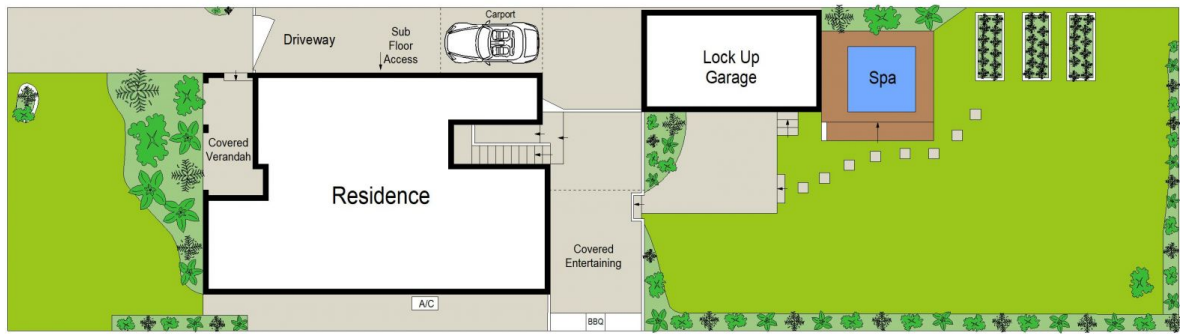
Land Size : 556 sqm
View : <https://www.gibsonpartners.com/sale/nsw/sutherland/burraneer/residential/house/7121732>



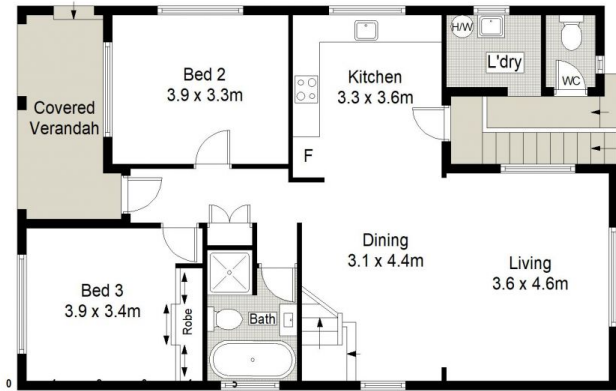
Ivan Lampret
02 9523 1333



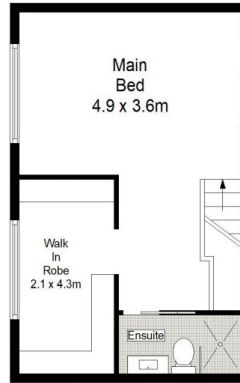
Karla Madgwick
02 9523 1333



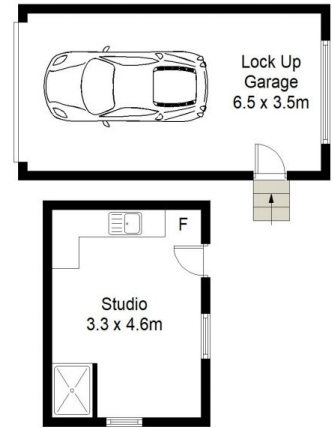
SITE PLAN (NOT TO SCALE)



GROUND FLOOR



FIRST FLOOR



LOWER GROUND FLOOR

Gibson Partners Real Estate Pty Ltd



Scale in metres. Indicative only. Dimensions are approximate. All information contained herein is gathered from sources we believe to be reliable. However we cannot guarantee its accuracy and interested persons should rely on their own enquiries.



50 Dominic Street, Burraneer

GIBSON