



4/2 McDonald Street Cronulla NSW

2 1 1

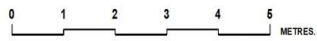
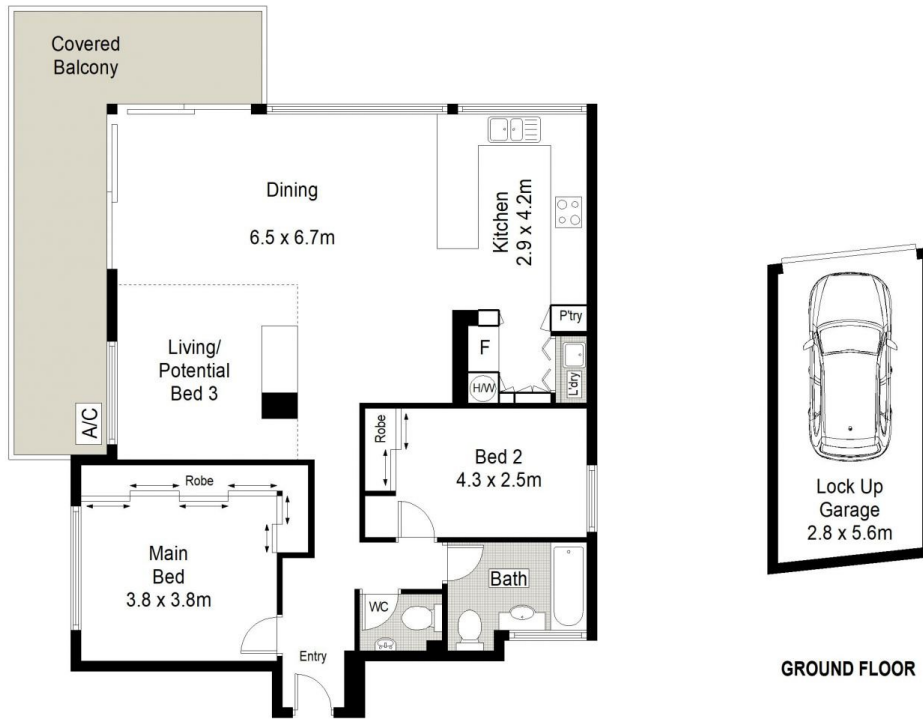
Rejoicing in the sublime serenity of postcard sunrises and panoramic views over Cronulla's beaches, this absolute oceanfront apartment offers an incredible lifestyle opportunity in a supremely sought-after central position. Boasting a desirable north-easterly aspect the interiors are flooded in natural sunlight and rejoice in modern finishes, seamless flow to the wrap around balcony and lift access from the security entry.

Positioned on level 2 of the tightly held 'Jacqueline' building and epitomizing the very essence of lifestyle living, this exceptional apartment provides direct access to The Esplanade walkway and is literally within footsteps to restaurants, cafes, surf club, park and approx. 200m to Cronulla Mall and transport.

Building Size : 117 sqm
View : <https://www.gibsonpartners.com/sale/nsw/sutherland/cronulla/residential/apartment/7266619>



Justin Buck
02 9523 1333



Gibson Partners Real Estate Pty Ltd

G Scale in metres. Indicative only. Dimensions are approximate. All information contained herein is gathered from sources we believe to be reliable. However we cannot guarantee its accuracy and interested persons should rely on their own enquiries.



4/2 McDonald Street, Cronulla

GIBSON