



6/29 Bando Road Cronulla NSW

2 1 2

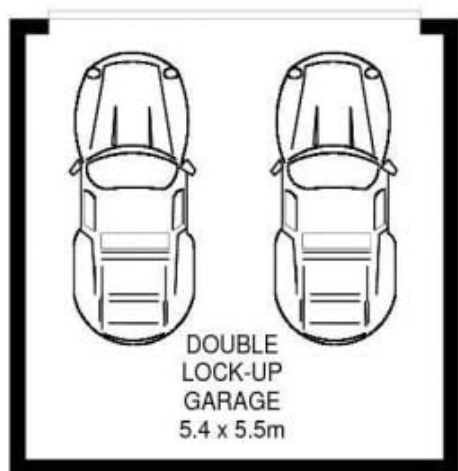
Superbly located and immaculately presented, this two bedroom apartment situated on the top floor and offering light-filled interiors is perfect for those looking for an easy care coastal lifestyle. Super convenient to beautiful beaches, Cronulla Mall, shops and transport.

- Stylish kitchen with breakfast bar & stainless steel appliances
- Open-plan living & dining room flows to a sunny west facing balcony
- Neat bathroom with separate powder room + internal laundry
- Two bedrooms both fitted with built-in wardrobes & juliet balconies
- Timber floorboards, air-conditioning, security block with intercom

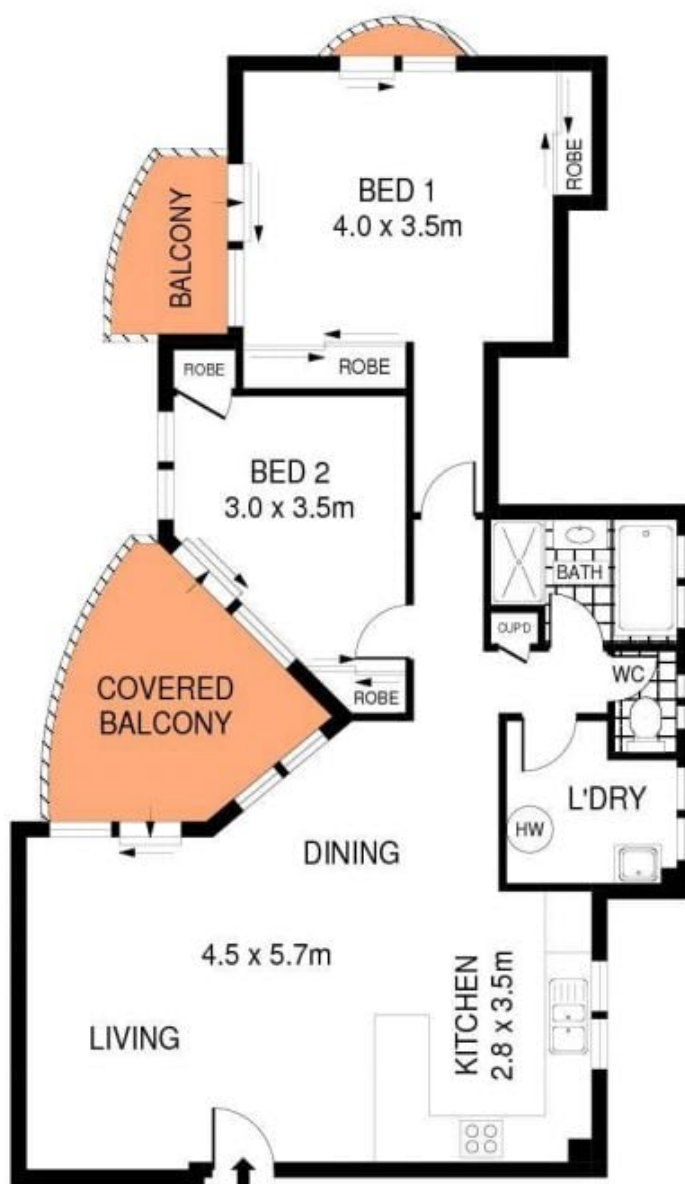
View : <https://www.gibsonpartners.com/lease/nsw/sutherland/cronulla/residential/apartment/7274820>



Abbey Smith
02 9523 1333



BASEMENT



LEVEL TWO



PLANS SHOWN ONLY INDICATIVE OF LAYOUT. DIMENSIONS ARE APPROXIMATE.
Ref. No: 99717



6/29 BANDO ROAD

CRONULLA