



## 49 Saunders Bay Road Caringbah South NSW

4 2 2

This single level family home may seem quite modest from the street but step within and you will discover an impressive single level floorplan that utilises space and natural light to perfection. Designed for easy indoor/outdoor entertaining further enhanced by two versatile living spaces, covered rear deck, pizza oven and saltwater inground pool basking in western sunshine.

Adding to the picture is the impressive 891sqm (approx) parcel of level land zoned R2 low density residential and providing the potential for re-development (STCA).

Positioned nearby local waterways, within 700m to Caringbah Public School, and convenient to local cafes, shops, parks and transport, this unique land holding provides endless opportunities and tremendous potential to

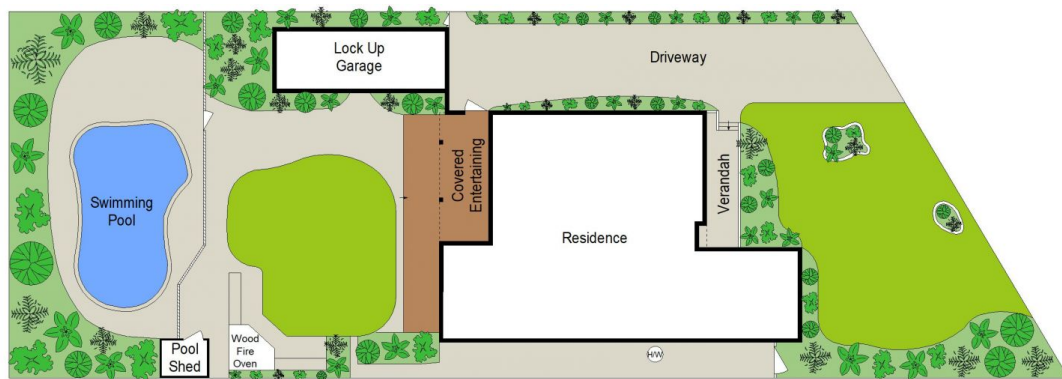
**Land Size** : 891 sqm  
**View** : <https://www.gibsonpartners.com/sale/nsw/sutherland/caringbah-south/residential/house/7299391>



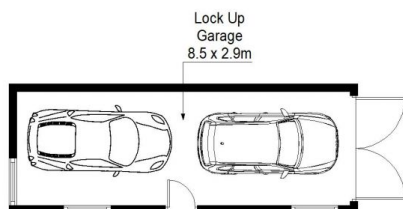
**Ivan Lampret**  
02 9523 1333



**Karla Madgwick**  
02 9523 1333



SITE PLAN (NOT TO SCALE)

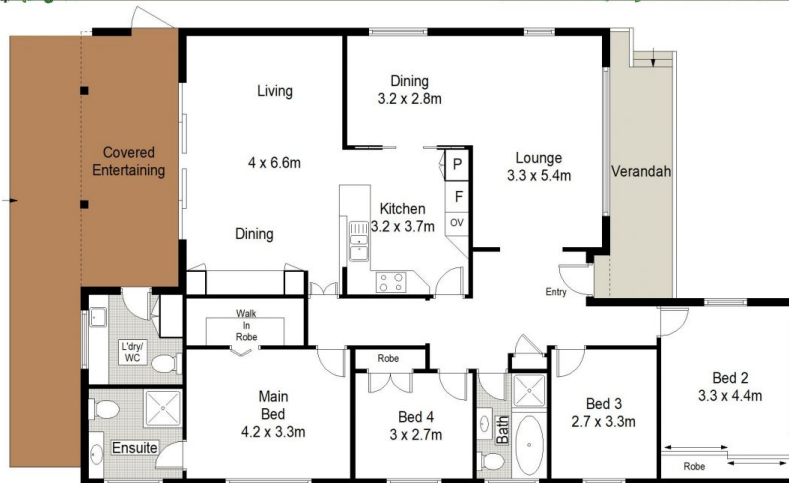


0 1 2 3 4 5 METRES.

Gibson Partners Real Estate Pty Ltd



Scale in metres. Indicative only. Dimensions are approximate. All information contained herein is gathered from sources we believe to be reliable. However we cannot guarantee its accuracy and interested persons should rely on their own enquiries.



49 Saunders Bay Road, Caringbah South

**GIBSON**