

8/7-11 Richmount Street Cronulla NSW

3 2 2

This elegant first floor apartment located in the boutique AZURE development showcases the perfect fusion of clever design, luxury finishes and effortless indoor-outdoor integration. Stately high ceilings and extensive floor to ceiling glazing accentuate the apartments many features and create open airy interiors that bathe in natural light.

Situated right in the heart of South Cronulla within just 260m (approx.) metres to Shelly beach and park, 300m (approx.) to Gunnamatta Bay and convenient to Cronulla train station, mall, and cafes; this modern apartment embodies a relaxed, low maintenance, seaside lifestyle.

- 1st floor position with lift access, floor-to-ceiling glazing and high ceilings
- Spacious open plan interiors provide a seamless flow to

Price : \$ 1,960,000

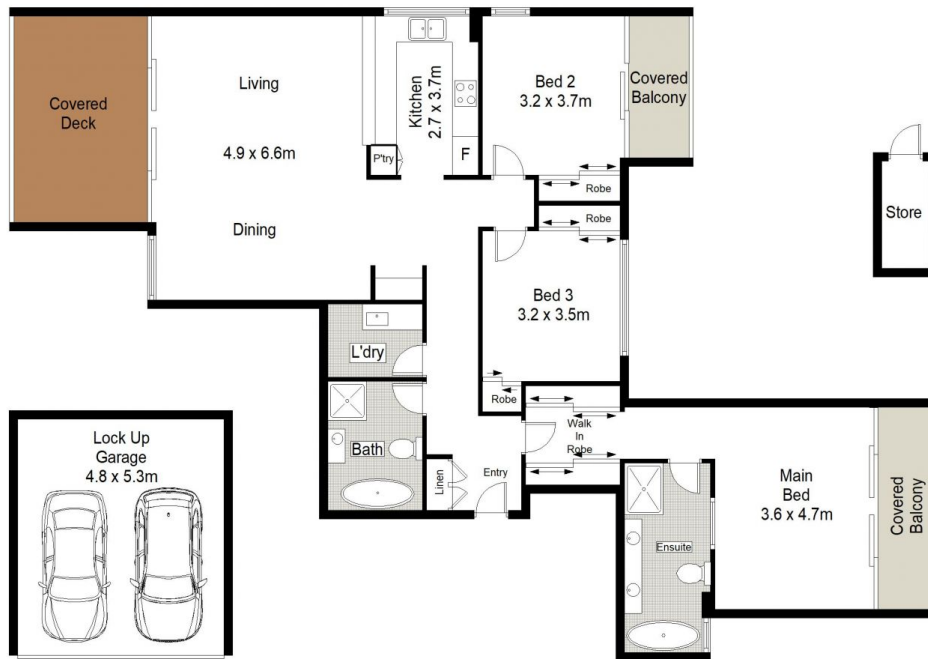
View : <https://www.gibsonpartners.com/sale/nsw/sutherland/cronulla/residential/apartment/7411407>



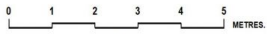
Ivan Lampret
02 9523 1333



Farrah Tidmarsh
02 9523 1333



LEVEL 1



Gibson Partners Real Estate Pty Ltd



Scale in metres. Indicative only. Dimensions are approximate. All information contained herein is gathered from sources we believe to be reliable. However we cannot guarantee its accuracy and interested persons should rely on their own enquiries.



8/7-11 Richmount Street, Cronulla South

GIBSON