



11A Coolabah Place Caringbah NSW

5 2 2

Boasting an appealing contemporary style, this master-built duplex offers sleek sophisticated interiors across two striking levels. Abundant northern light floods the versatile floorplan, seamlessly integrating with the outdoors and creating the perfect home for luxury family living and entertaining all year round.

Families will adore this a quiet cul-de-sac location which promises a convenient low maintenance lifestyle placed approximately 60m to Caringbah High School, 600m to Caringbah North Public School, 250m to Caringbah Bowling Club and 950m to Caringbah shops, cafes and train station.

- Dedicated lounge and dining areas integrates seamlessly with the outdoors
- 40mm stone kitchen featuring gas cook-top and integrated dishwasher
- Four spacious bedrooms, beautifully appointed floor-to-ceiling tiled bathrooms
- Luxury master suite with balcony, stunning WIR and dual vanity ensuite
- Versatile fifth bedroom/2nd living area/home office located on lower level
- Abundant storage throughout, internal laundry, powder room, zoned ducted A/C

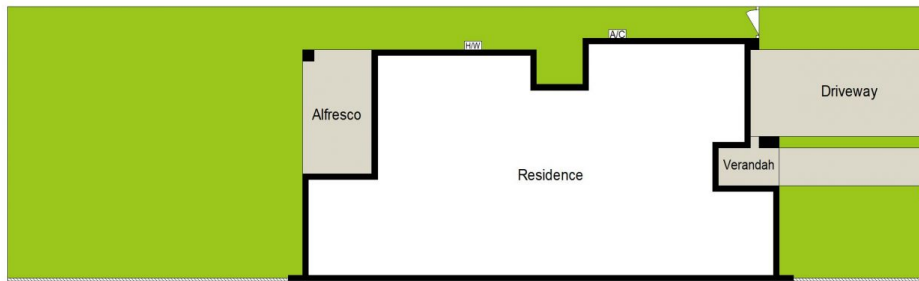
View : <https://www.gibsonpartners.com/sale/nsw/sutherland/caringbah/residential/semi-detached/7424110>



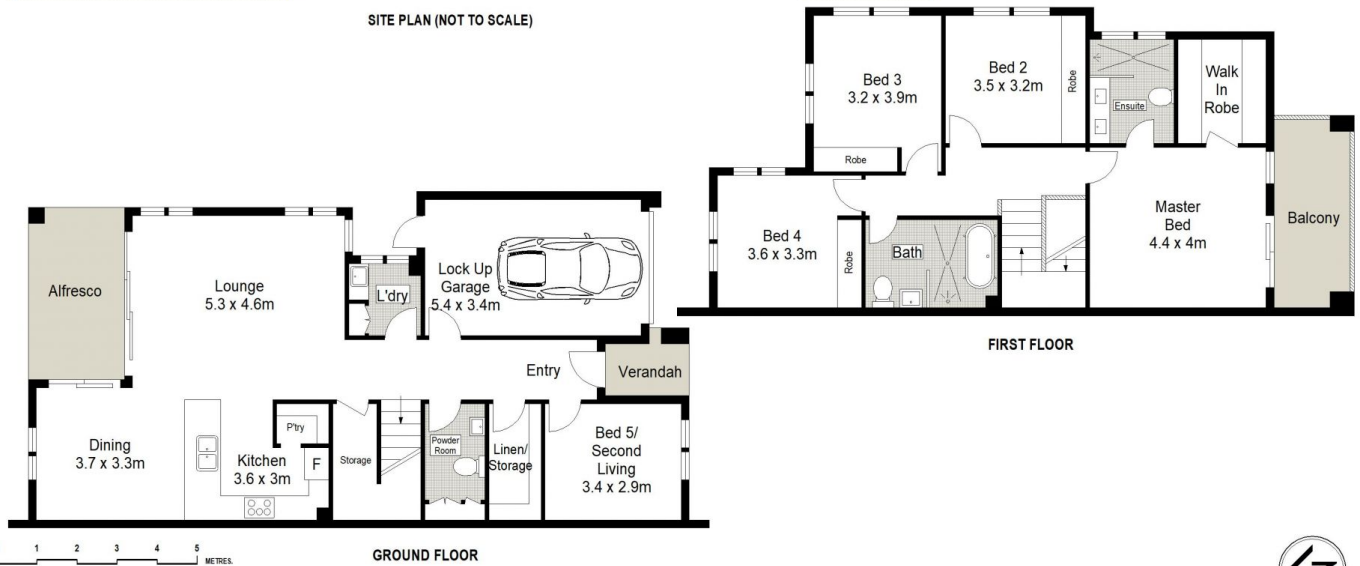
Ivan Lampret
02 9523 1333



Karla Madgwick
02 9523 1333



SITE PLAN (NOT TO SCALE)



FIRST FLOOR

GROUND FLOOR

Gibson Partners Real Estate Pty Ltd



Scale in metres. Indicative only. Dimensions are approximate. All information contained herein is gathered from sources we believe to be reliable. However we cannot guarantee its accuracy and interested persons should rely on their own enquiries.



11A Coolabah Place, Caringbah

GIBSON