



9/23-29 Hotham Road Gymea NSW

3 2 2

Boasting low maintenance lifestyle appeal, this cleverly designed north facing townhouse combines premium comfort with easy care living and convenience, located within approximately 750m of Gymea Village shops, cafes, restaurants and train station.

An ideal first homeowner or investment opportunity, this delightful home is set within a well-maintained complex of just 14 residences featuring immaculately presented light-filled interiors, modern appointments and two-car garaging.

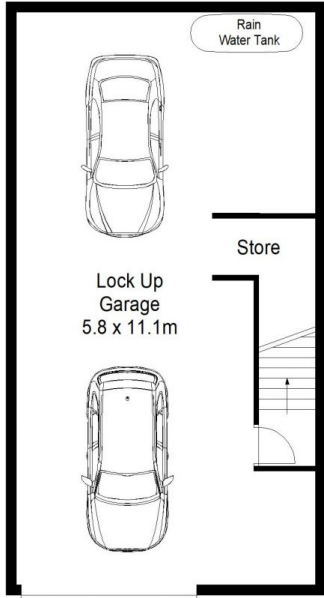
- Spacious light filled living on entry over easy-care porcelain tiles
- Modern kitchen featuring stone benchtops and gas cooking

Price : \$ 1,130,000

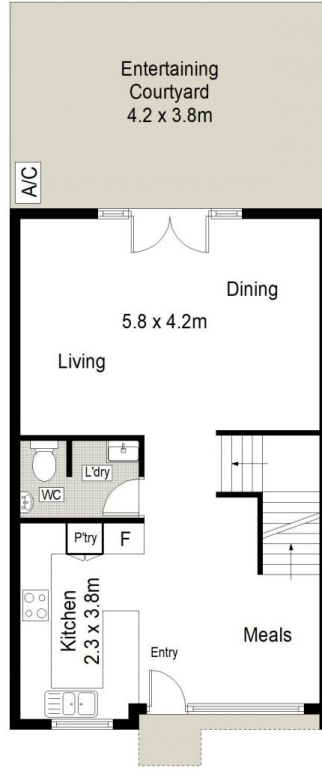
View : <https://www.gibsonpartners.com/sale/nsw/sutherland/gymea/residential/townhouse/7437875>



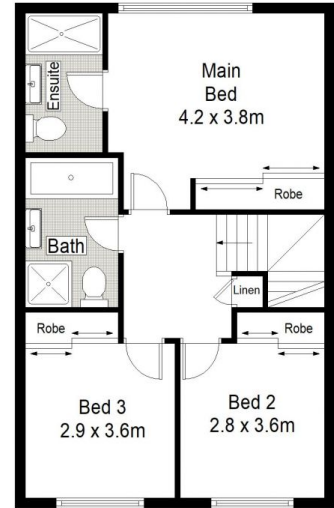
Chris Walsh
02 9523 1333



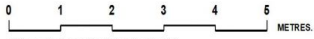
LOWER GROUND FLOOR



GROUND FLOOR



FIRST FLOOR



Gibson Partners Real Estate Pty Ltd

 Scale in metres. Indicative only. Dimensions are approximate. All information contained herein is gathered from sources we believe to be reliable. However we cannot guarantee its accuracy and interested persons should rely on their own enquiries.



9/23-29 Hotham Road, Gymea

GIBSON