



### 3 Verbena Place Caringbah South NSW

4 2 3

This single level family home may seem quite modest from the street but step within and you will discover an impressive single level floorplan that utilises space and natural light to perfection. Designed for easy indoor/outdoor entertaining further enhanced by four versatile living spaces, a central entertaining deck and immaculate garden basking in western sunshine.

Ideally situated in a quiet tree-lined cul de sac of Caringbah South convenient to local schools, shops, cafes and transport, this welcoming, light-filled abode provides the perfect setting for easy family living.

- Open plan family living blends seamlessly into outdoor entertaining
- Spacious Caesarstone kitchen with Ilve appliances and

**Land Size** : 588 sqm  
**View** : <https://www.gibsonpartners.com/sale/nsw/sutherland/caringbah-south/residential/house/7466077>



**Ivan Lampret**  
02 9523 1333



**Karla Madgwick**  
02 9523 1333

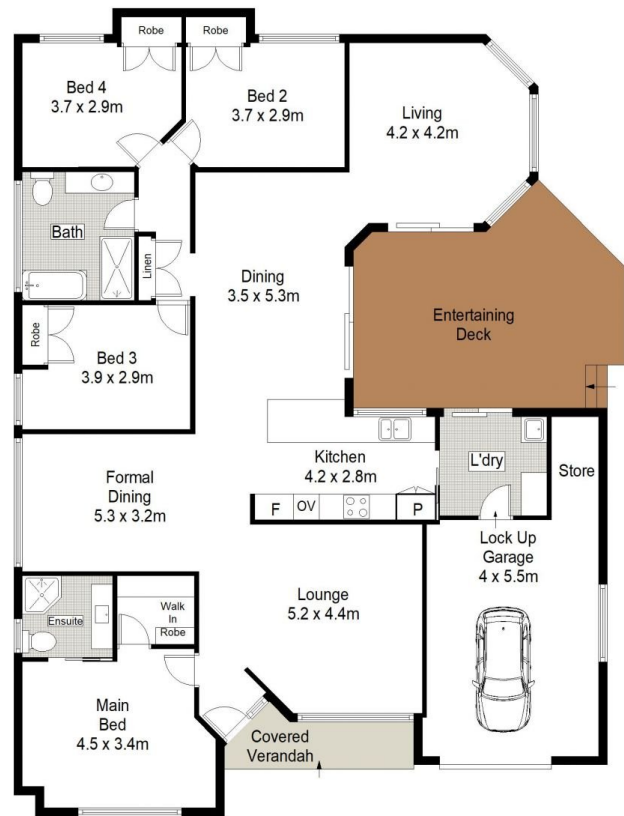


0 1 2 3 4 5 METRES.

Gibson Partners Real Estate Pty Ltd



Scale in metres. Indicative only. Dimensions are approximate. All information contained herein is gathered from sources we believe to be reliable. However we cannot guarantee its accuracy and interested persons should rely on their own enquiries.



**GIBSON**

3 Verbena Place, Caringbah South