



## 31/31-33 Gerrale Street Cronulla NSW

2 1 1

Perfectly positioned in the heart of Cronulla and boasting views of both the ocean and Gunnamatta Bay, this sixth floor 'Belgrave' apartment with lift access, occupies a coveted northwest aspect with a superb sense of space, light and privacy.

**Price** : \$ 1,155,000

**View** : <https://www.gibsonpartners.com/sale/nsw/sutherland/cronulla/residential/apartment/7529342>

Whether you like an early morning walk, eating out, a swim or surf, it's all at your doorstep waiting for you to unpack and enjoy. This property is all about location and will suit buyers seeking easy care low maintenance beachside convenience.

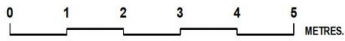
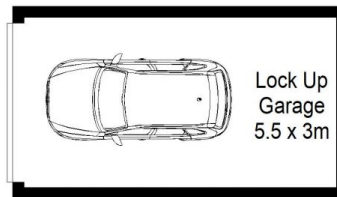
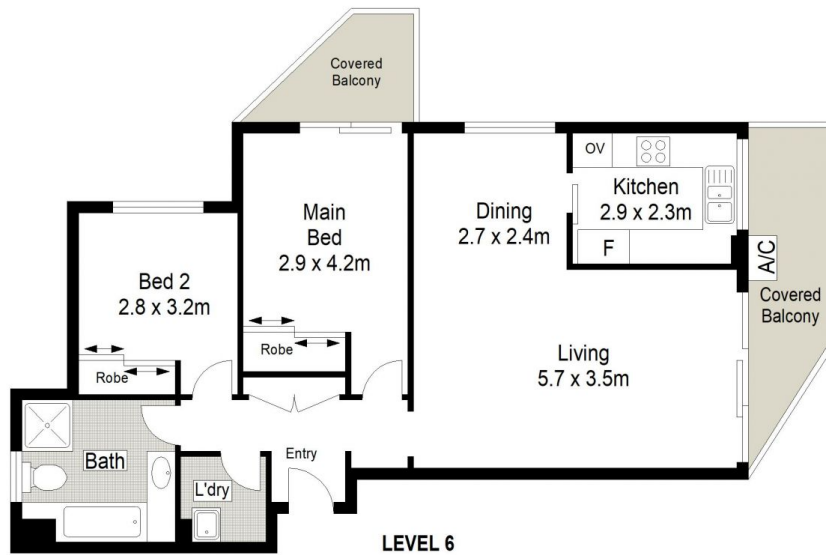
- Living and dining areas flow to a north facing balcony
- Neat kitchen with gas cooking and dishwasher
- Two double sized bedrooms with mirrored built in robes
- Master has access to second balcony and enjoys bay



**Ivan Lampret**  
02 9523 1333



**Karla Madgwick**  
02 9523 1333



Gibson Partners Real Estate Pty Ltd



Scale in metres. Indicative only. Dimensions are approximate. All information contained herein is gathered from sources we believe to be reliable. However we cannot guarantee its accuracy and interested persons should rely on their own enquiries.



31/31 Gerrale Street, Cronulla

**GIBSON**