



## 23 Marina Crescent Gymea Bay NSW

5 🛏 2 🚿 3 🚗

Enviably immersed in the tranquillity of a serene North West Arm backdrop and views of The Port Hacking River, this full brick architectural designed split level home is reminiscent of a sophisticated treehouse retreat. Abundant windows allow bay views and natural light to flood the home which offers a flexible layout, choice of living areas and central outdoor entertaining space with spa.

Ideally placed within a premium bayside pocket of Gymea Bay, with level entry to the rear of the property and easy access to waterways, local Public Schools, shops, cafes, parks and transport; this beautiful home offers incredible convenience and is ready for your immediate enjoyment.

- Sparkling water views up North West Arm and the Port Hacking River

**Land Size** : 613 sqm  
**View** : <https://www.gibsonpartners.com/sale/nsw/utherland/gymea-bay/residential/house/7588650>



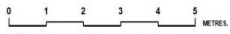
**Ivan Lampret**  
02 9523 1333



**Farrah Tidmarsh**  
02 9523 1333



FIRST FLOOR



Gibson Partners Real Estate Pty Ltd

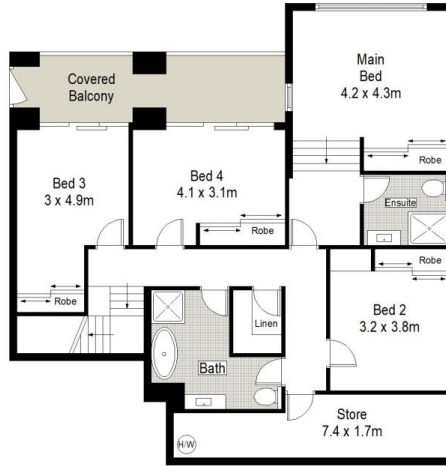
Scale in metres. Indicative only. Dimensions are approximate. All information contained herein is gathered from sources we believe to be reliable. However we cannot guarantee its accuracy and interested persons should rely on their own enquiries.



SECOND FLOOR



FIRST FLOOR



GROUND FLOOR



SITE PLAN (NOT TO SCALE)



23 Marina Crescent, Gympie Bay

**GIBSON**