



## 10/32 The Esplanade Cronulla NSW

2 1 1

Experience breathtaking panoramic ocean and beach views from almost every room of this modern two bedroom apartment positioned directly on The Esplanade in front of the infamous Blackwoods Beach and Shark island. Immaculately presented with modern interiors, balcony and lock-up garage, there is nothing left to do except enjoy the magical sunrise and watching the whales go by.

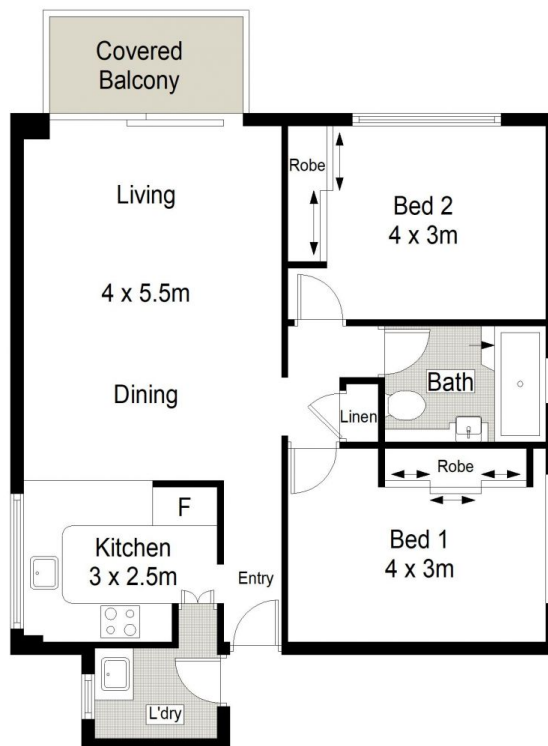
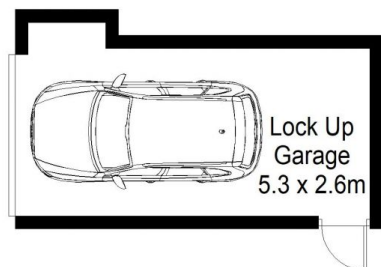
Literally footsteps to the best beaches Cronulla has to offer and moments to local, cafes, restaurants, clubs, shops and transport, lifestyle opportunities like this are seldom offered and rarely found.

- N/E aspect and prime lifestyle location, direct Esplanade access
- Spacious light filled interiors flow to entertainer's balcony

**View :** <https://www.gibsonpartners.com/sale/nsw/sutherland/cronulla/residential/apartment/7623908>



**Justin Buck**  
02 9523 1333



LEVEL 2

0 1 2 3 4 5 METRES.

Gibson Partners Real Estate Pty Ltd

 Scale in metres. Indicative only. Dimensions are approximate. All information contained herein is gathered from sources we believe to be reliable. However we cannot guarantee its accuracy and interested persons should rely on their own enquiries.



**GIBSON**

10/32 The Esplanade, Cronulla