



32/59-63 Ewos Parade Cronulla NSW

2 1 1

Embracing an expansive ocean panorama from Kurnell, over Shark Island, across to Jibbon Beach and beyond, this spacious two bedroom apartment is proudly positioned on the 8th floor of the tightly held 'Brentwood' building offering spacious original interiors, soaring floor to ceiling windows, lift access and tremendous potential to personalise.

Immersed in the iconic Cronulla Beach lifestyle and ideally located within approx. 200m metres to The Esplanade, 450m to Blackwoods Beach, and 300m to Shelly Park. The bus stop out front and 100m walk to a convenient cluster of shops, doctor, and pharmacy also make this apartment a prime opportunity for the first home buyer, downsizer or astute investor.

View : <https://www.gibsonpartners.com/sale/nsw/sutherland/cronulla/residential/apartment/7641586>

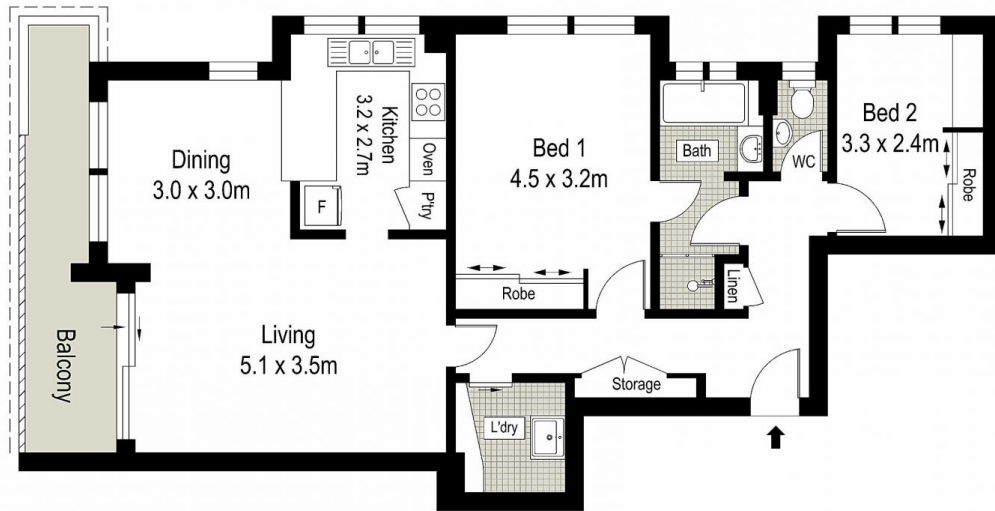


Ivan Lampret
02 9523 1333

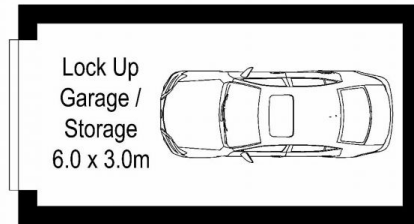


Karla Madgwick
02 9523 1333

- Eighth floor position of renowned Brentwood building



LEVEL EIGHT



GROUND LEVEL

0 1 2 3 4 5 METRES.

Gibson Partners Real Estate Pty Ltd

 Scale in metres, Indicative only. Dimensions are approximate. All information contained herein is gathered from sources we believe to be reliable. However we cannot guarantee its accuracy and interested persons should rely on their own enquiries.

32 / 59-63 Ewos Parade, Cronulla

GIBSON

