



2/32 Seaview Street Cronulla NSW

3 2 2

Flawlessly crafted and set within the Moana development, this stunning boutique residence offers a seamless integration of indoor and outdoor living and is designed to optimise a relaxed low maintenance lifestyle.

Price : \$ 1,695,000

View : <https://www.gibsonpartners.com/sale/nsw/sutherland/cronulla/residential/townhouse/7691151>

Wonderfully convenient and perfectly located within approximately 600m to Cronulla's pristine beaches, 450m to Cronulla Golf Club featuring 'The Greenery' Restaurant and 900m to Cronulla shopping mall and café precinct.

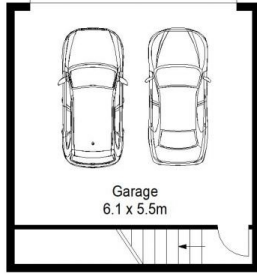


Ivan Lampret
02 9523 1333

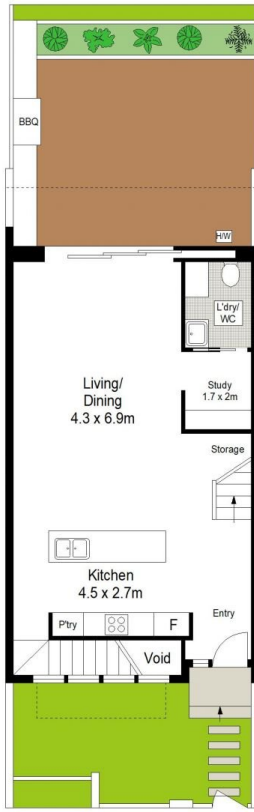


Farrah Tidmarsh
02 9523 1333

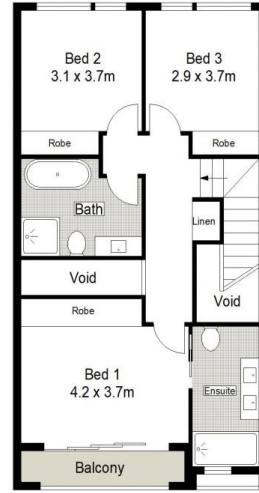
- Architecturally designed townhouse within the boutique complex 'Moana'
- ? Open plan, sunlight interiors flow to a north facing entertaining courtyard
- ? Gourmet island kitchen with stone benchtops and Miele appliances



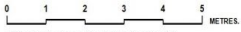
LOWER GROUND FLOOR



GROUND FLOOR



FIRST FLOOR



Gibson Partners Real Estate Pty Ltd



Scale in metres. Indicative only. Dimensions are approximate. All information contained herein is gathered from sources we believe to be reliable. However we cannot guarantee its accuracy and interested persons should rely on their own enquiries.



2/32 Seaview Street, Cronulla

GIBSON