



38 Wentworth Street Caringbah South NSW

6 4 5

Set on a generous 803sqm parcel of land, this solid family home blends charming period detail and graceful interiors to create a choice of formal and informal living areas and effortless flow to the covered entertaining, inground pool and Tuscan inspired garden.

Radiating character and warmth from the high ornate ceilings, decorative lead light windows and solid timber flooring, this delightful home provides a welcoming haven for growing families demanding space in a sought-after locale convenient to everyday essentials of local schools, sporting fields, waterways, village shops and transport.

- Charming period detail and graceful interiors throughout
- Expansive family living and dining flows to outdoor entertaining

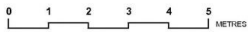
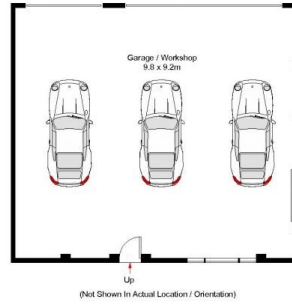
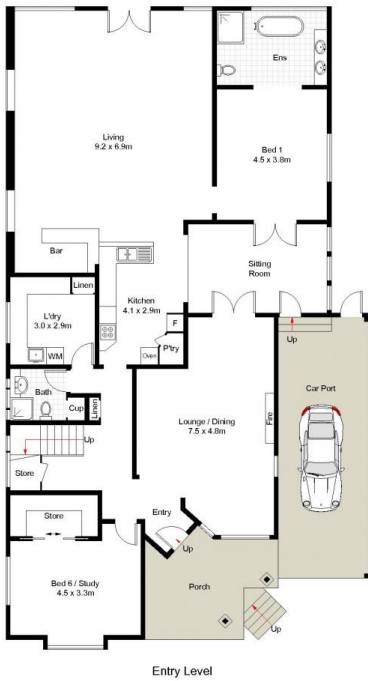
Land Size : 803 sqm
View : <https://www.gibsonpartners.com/sale/nsw/sutherland/caringbah-south/residential/house/7761085>



Ivan Lampret
02 9523 1333



Farrah Tidmarsh
02 9523 1333



Gibson Partners Real Estate Pty Ltd



Scale in metres. Indicative only. Dimensions are approximate. All information contained herein is gathered from sources we believe to be reliable. However we cannot guarantee its accuracy and interested persons should rely on their own enquiries.



38 Wentworth Avenue, Caringbah South

GIBSON