



### 3 Green Street Cronulla NSW

4 3 2

Imaginatively transformed, this contemporary coastal abode boasts a touch of industrial flair and provides the perfect blend of quality and sophistication. The abundant light filled interiors have been cleverly designed to provide a seamless flow from the indoors out to the relaxed alfresco entertaining area, level lawn and spa.

Delivering the ultimate family lifestyle, this substantial full brick home is enviably located within 350m to Wooloware Station and Wills Rd Village shops and convenient to Cronulla Golf Course, schools, transport and approx 1km to a choice of wonderful beaches.

- Open plan interiors, multiple living areas, seamless indoor/outdoor flow
- Stunning stone island kitchen, quality appliances and

**Price** : \$ 3,000,000  
**Land Size** : 563 sqm  
**View** : <https://www.gibsonpartners.com/sale/nsw/sutherland/cronulla/residential/house/7814368>



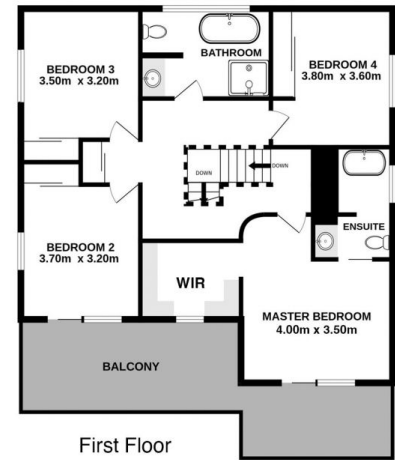
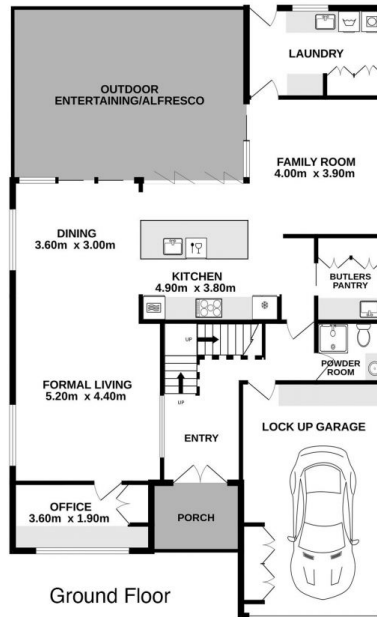
**Denise Howell**  
02 9523 1333



0 1 2 3 4 5 METRES.

Gibson Partners Real Estate Pty Ltd

Scale in metres. Indicative only. Dimensions are approximate. All information contained herein is gathered from sources we believe to be reliable. However we cannot guarantee its accuracy and interested persons should rely on their own enquiries.



3 Green Street, Cronulla

**GIBSON**