



10/22-24 Victoria Street Wollongong NSW

2 1 1

Exuding contemporary appeal, this immaculate apartment offers the prized opportunity to live in luxury, while being surrounded by enviable lifestyle conveniences. Embellished by quality finishes and plenty of room to relax, with light-filled open plan interiors and pleasant local outlooks from almost every room.

Price : \$ 700,000

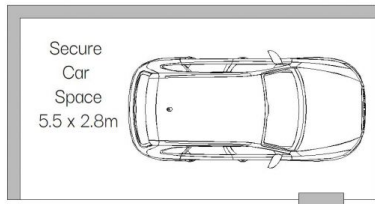
View : <https://www.gibsonpartners.com/sale/nsw/wollongong-illawarra/wollongong/residential/apartment/7823550>

Conveniently placed to enjoy a range of restaurants, wine bars and shopping delights, with both Wollongong Beaches just a stroll away.

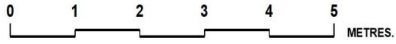
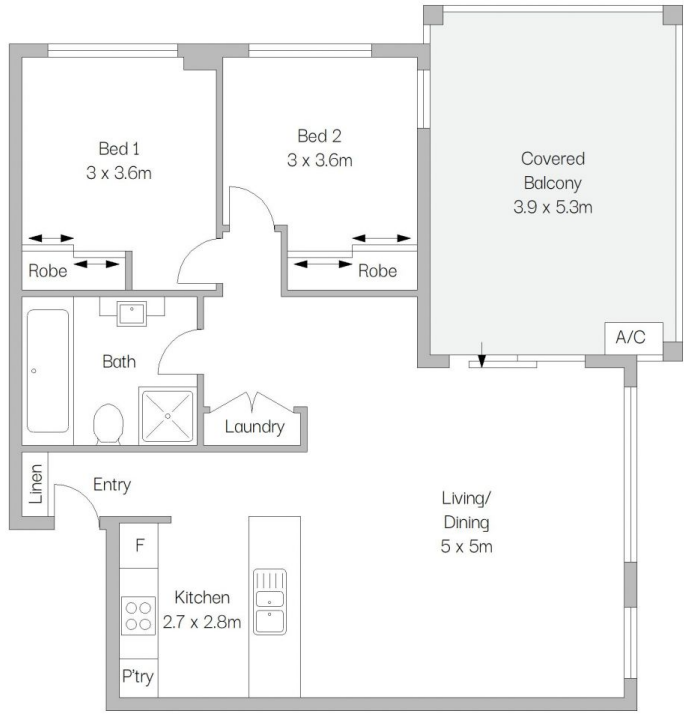
- Impressive flowing floorplan offers light-filled open plan living areas
- All-weather entertainers' terrace with gas connectivity point for bbq
- Caesarstone kitchen presents gas appliances and casual



Chris Walsh
02 9523 1333



BASEMENT



Gibson Partners Real Estate Pty Ltd

FLOOR PLAN ON DEMAND Scale in metres. Indicative only. Dimensions are approximate. All information contained herein is gathered from sources we believe to be reliable. However we cannot guarantee its accuracy and interested persons should rely on their own enquiries.

10/22-24 Victoria Street, Wollongong



GIBSON