



## 4/14 Arthur Avenue Cronulla NSW

2 1 1

Situated in the well maintained 'South Reef' building located directly on The Esplanade, this ground floor, two bedroom apartment with private entry offers a generous floor plan and some lovely ocean views from the living area.

**View :** <https://www.gibsonpartners.com/lease/nsw/sutherland/cronulla/residential/unit/7901622>

Graced with a lock up garage and set within approximately 50m to Cronulla's iconic Blackwood's Beach, 500m to Shelly Beach, rock pool and park, this apartment also provides easy access to local shops, restaurants and transport.

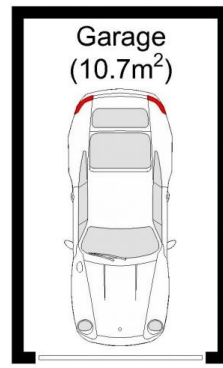
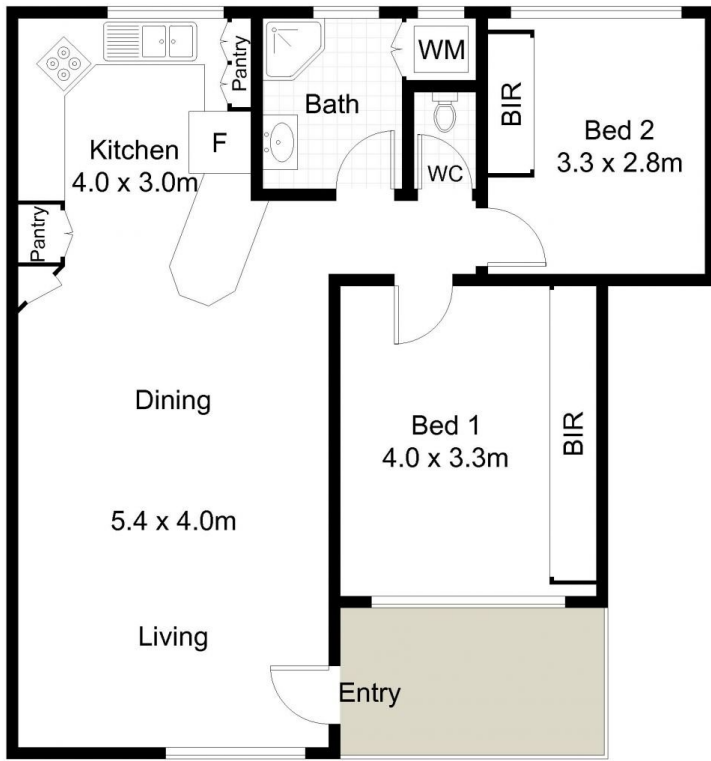
- Spacious light-filled living area with split system A/C
- Open plan kitchen features stone benchtops
- Good size bedrooms both with built-in wardrobes
- Laundry facilities and bathroom with separate WC



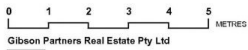
**Nicholas Di Martino**  
02 9523 1333



**Chris Malliate**  
02 9523 1333



(Not Shown In Actual Location / Orientation)



Ground Floor



**G** Scale in metres. Indicative only. Dimensions are approximate. All information contained herein is gathered from sources we believe to be reliable. However we cannot guarantee its accuracy and interested persons should rely on their own enquiries.

4/14 Arthur Avenue, Cronulla

**GIBSON**