



7/31 The Esplanade Cronulla NSW

2 1

Rejoicing in the sublime serenity of an absolute waterfront security building with sparkling ocean views over Shark Island, this coastal-inspired renovated apartment relishes in northern sunlight and a generous layout.

View : <https://www.gibsonpartners.com/sale/nsw/sutherland/cronulla/residential/apartment/7908572>

Positioned at the side of the building and epitomizing the very essence of lifestyle living, set within only 15m to Cronulla's iconic Blackwood's Beach, 500m to Shelly Beach, rock pool and park and provides easy access to local shops, restaurants and Cronulla railway station.

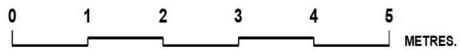
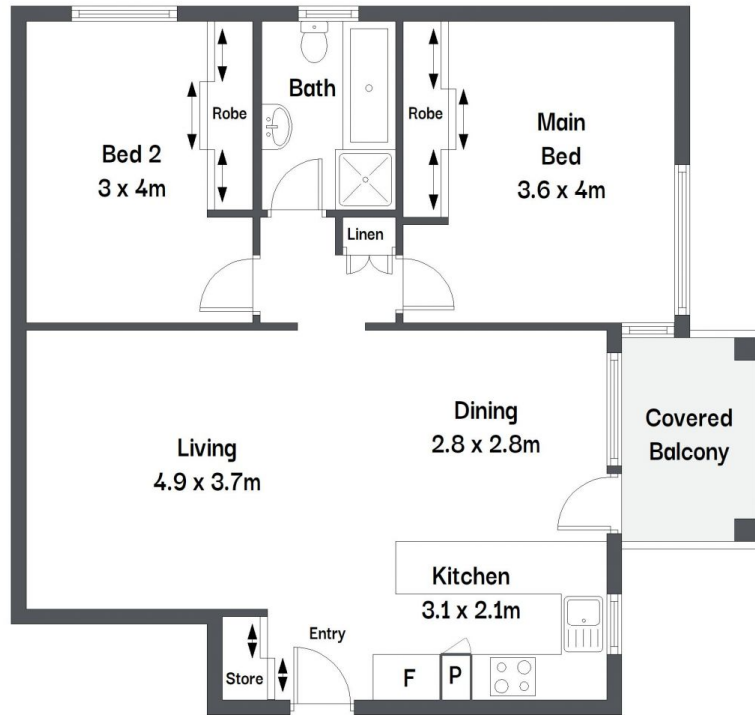


Ivan Lampret
02 9523 1333



Karla Madgwick
02 9523 1333

- First floor position in an absolute ocean front building
- Direct view out to Shark Island and surrounding ocean
- Spacious, natural light-filled lounge and dining area
- Brand new kitchen, stone bench-tops and great storage
- Fresh paint, new carpet and limewashed timber floors



Gibson Partners Real Estate Pty Ltd

FLOOR PLAN ON DEMAND Scale in metres. Indicative only. Dimensions are approximate. All information contained herein is gathered from sources we believe to be reliable. However we cannot guarantee its accuracy and interested persons should rely on their own enquiries.

7/31 The Esplanade, Cronulla



GIBSON