



5 La Boheme Avenue Caringbah South NSW

6 3 5

Enjoy the fabulous lifestyle that living so close to the beautiful Port Hacking River offers.

The current owners are going to miss living in this very spacious home located in not only a highly sought after neighbourhood, but also a popular street. This two-storey home is ideal for a growing family or older teenagers alike with plenty of breakout spaces.

The front of the house offers opportunity for private guest quarters/parent or teenage retreat with a large lounge area, bedroom with built-in robe and own bathroom.

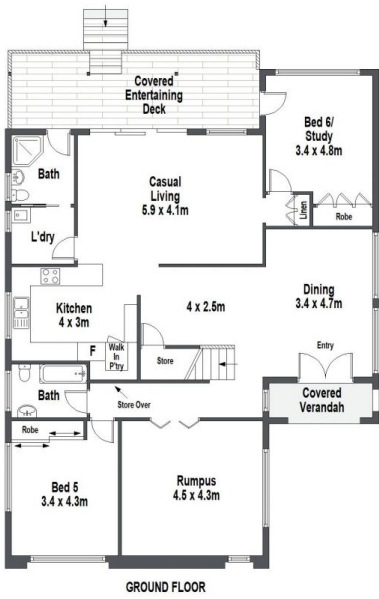
Featuring sunny north aspect all-year round to rear yard and living spaces, dual street access, plenty of off-street parking available whether it be for your boat, jet ski, trailer,

Land Size : 594.4 sqm

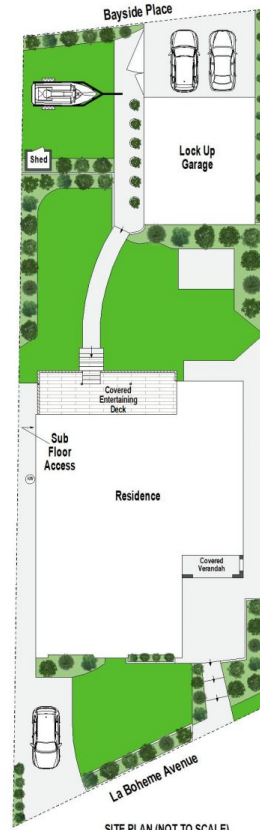
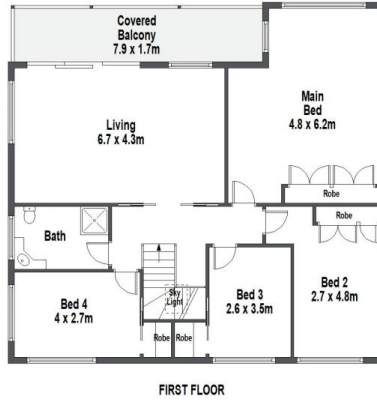
View : <https://www.gibsonpartners.com/sale/nsw/sutherland/caringbah-south/residential/house/7929379>



Suzanne Boylan
02 9523 1333



Port facing River views



0 1 2 3 4 5 METRES

Gibson Partners Real Estate Pty Ltd

FLOOR PLAN ON DEMAND Scale in metres. Indicative only. Dimensions are approximate. All information contained herein is gathered from sources we believe to be reliable. However we cannot guarantee its accuracy and interested persons should rely on their own enquiries.

5 La Boheme Avenue, Caringbah South

GIBSON

