



205/33 Croydon Street Cronulla NSW

3 2 2

Embraced by the sun and sea, Pavilion's leading-edge architecture is crafted for the comfort of its residents who enjoy the Central Cronulla lifestyle. Boasting house-like features with timeless, state-of-the-art, low maintenance finishes. Every detail has been thoughtfully considered, from the open-plan living and dining area to the dual balconies capturing Gunnamatta Bay views and oversized windows flooding the space with natural light.

Bring your pets along and relish in this exceptional lifestyle opportunity providing level access to Cronulla Mall and its array of eateries, shopping and transport as well as the waterside attractions of Gunnamatta Bay and Cronulla's wonderful beaches.

View : <https://www.gibsonpartners.com/sale/nsw/sutherland/cronulla/residential/apartment/7930984>

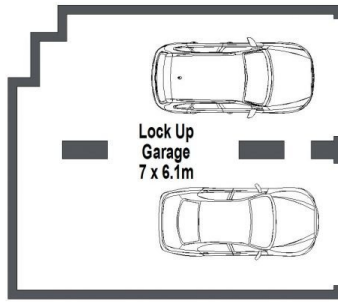


Ivan Lampret
02 9523 1333

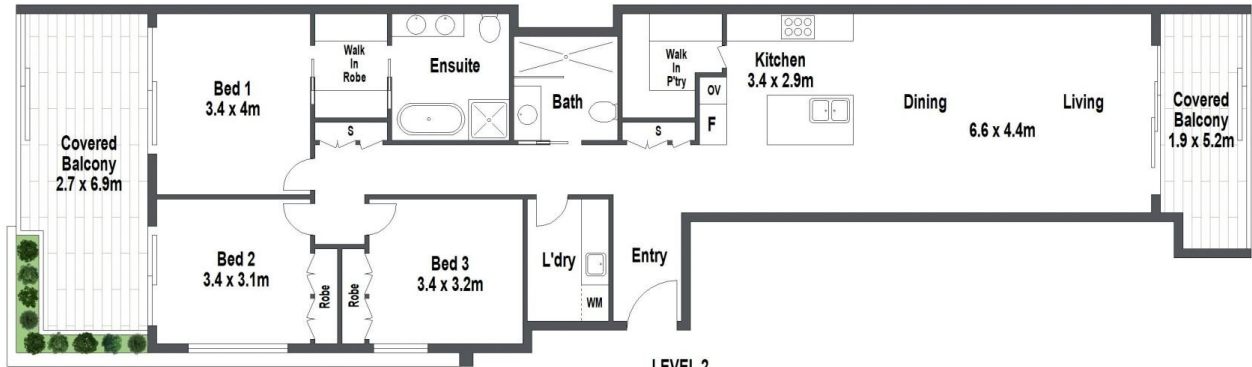


Karla Madgwick
02 9523 1333

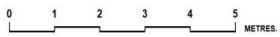
- Lovely outlook over the Cronulla Bowling Greens and



LEVEL B1



LEVEL 2



Gibson Partners Real Estate Pty Ltd

FLOOR PLAN ON DEMAND Scale in metres. Indicative only. Dimensions are approximate. All information contained herein is gathered from sources we believe to be reliable. However we cannot guarantee its accuracy and interested persons should rely on their own enquiries.



205/33 Croydon Street, Cronulla

GIBSON