

## 403/4 Foreshore Boulevard Woollooware NSW

2 2 1

Situated on the 4th floor of the esteemed Crest Building, this meticulously crafted two-bedroom apartment epitomises luxury living. Boasting resort-style amenities and a coveted easterly aspect with captivating views of Shark Park, it's only a short 2.7km easy walk or drive to Cronulla's beaches, restaurants, cafes and more.

Exuding contemporary elegance, the residence features a seamless open floor plan that effortlessly integrates the lounge/dining area with a sun-drenched balcony overlooking Shark Park. Complete with ducted air-conditioning, generously proportioned bedrooms, a versatile study, and an internal laundry, this home harmoniously blends opulence with practicality, affording residents ample time to indulge in the array of amenities available.

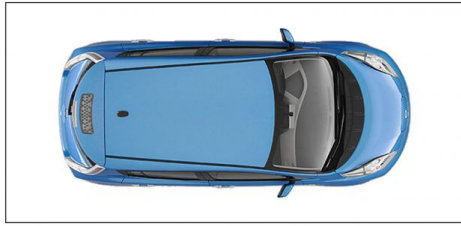
**Price** : \$ 1,100,000

**View** : <https://www.gibsonpartners.com/sale/nsw/sutherland/woollooware/residential/apartment/7933233>

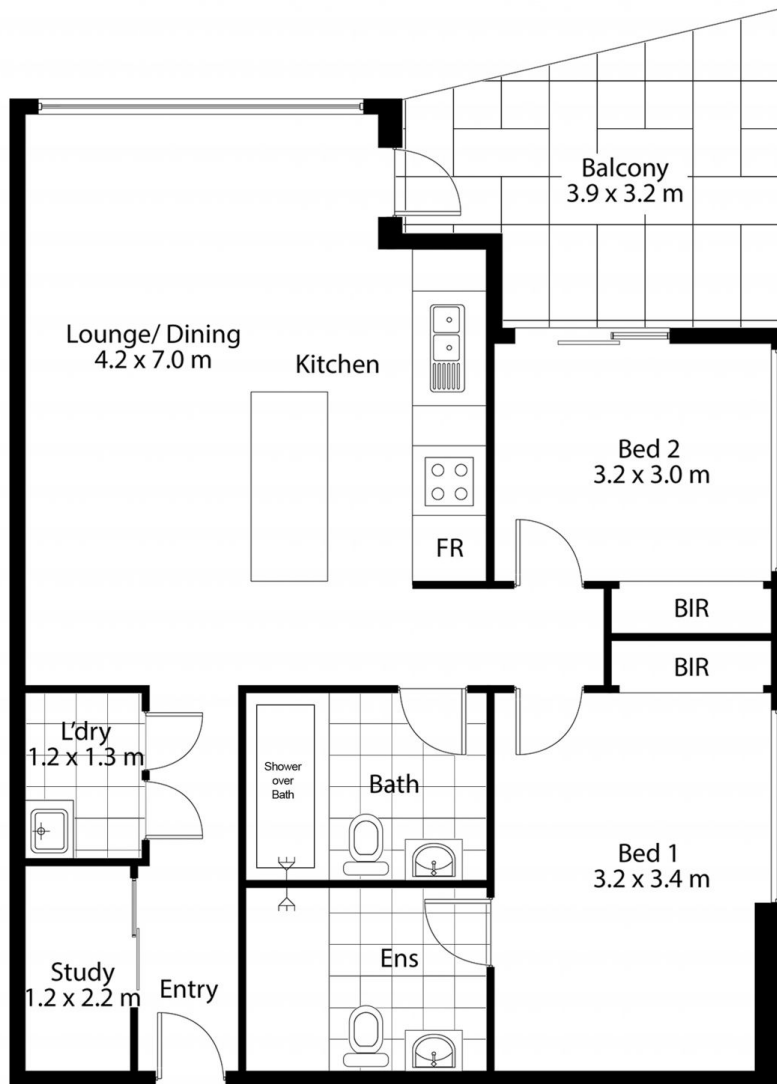


**Christian Payne**  
02 9523 1333

### Single Car Space



storage  
1sqm



## 403/4 Foreshore Boulevard, Woollooware

DISCLAIMER: All care has been taken in preparing this floor plan, however the accuracy is not guaranteed and no liability will be accepted for any reliance placed upon it.  
Produced by Sydney Media Projects, email: [sydneymediaprojects@gmail.com](mailto:sydneymediaprojects@gmail.com)