



## 14 Coolangatta Avenue Burraneer NSW

4 2 2

Highset and immersed in breathtaking views of Gunnamatta Bay, this substantial North facing brick family home unfolds over a flexible dual level layout, offering generous living and entertaining areas, plentiful accommodation, large level lawn and inground pool framed by pristine water views.

Occupying approx. 651sqm of prime waterside land, providing incredible potential to personalise and further capitalise on its prestigious cul-de-sac address placed within approx. 250m to the Royal Motor Yacht Club and convenient to village shops, bus and train services as well as local schools.

- Versatile choice of formal and informal living spaces with views

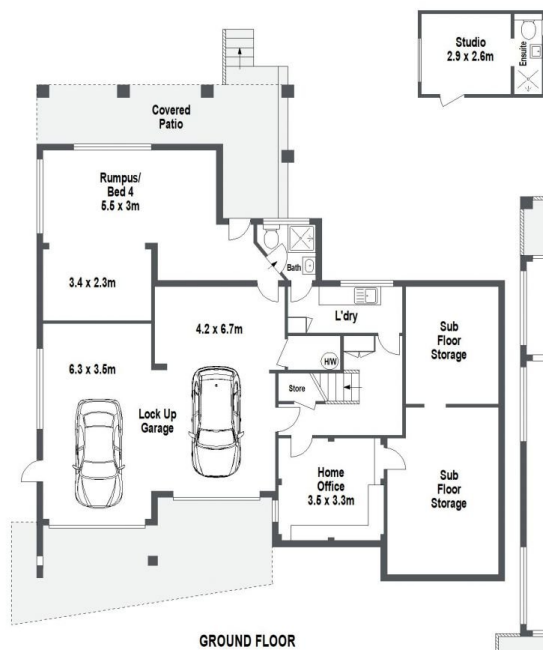
**Land Size** : 651 sqm  
**View** : <https://www.gibsonpartners.com/sale/nsw/sutherland/burraneer/residential/house/7981315>



**Adam Wilkinson**  
02 9523 1333



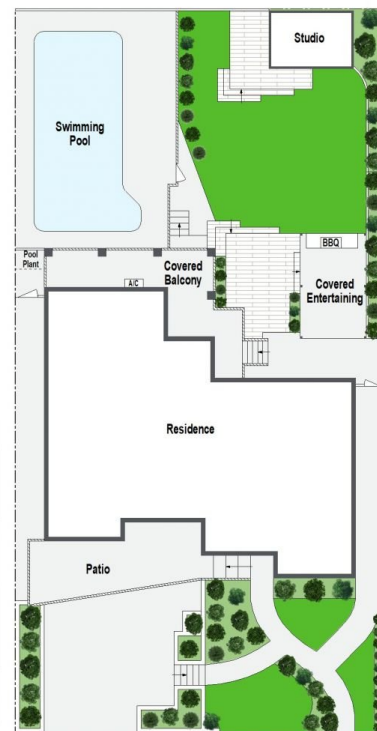
**Farrah Tidmarsh**  
02 9523 1333



0 1 2 3 4 5 METRES

Gibson Partners Real Estate Pty Ltd

**FLOOR PLAN**  
ON DEMAND Scale in metres. Indicative only. Dimensions are approximate. All information contained herein is gathered from sources we believe to be reliable. However we cannot guarantee its accuracy and interested persons should rely on their own enquiries.



14 Coolangatta Avenue, Burraneer

**GIBSON**