



23B Dolans Road Woollooware NSW

3 2 2

Architecturally designed and immaculately presented, this impressive duplex sets a high benchmark for quality, comfort and detail flaunting crisp coastal finishes, raked ceilings, oversized windows and glass sliders that illuminate this home in natural northern light and brilliance.

With a focus on seamless indoor/outdoor integration and low maintenance living, this wonderful home resides among the family-friendly suburb of Woollooware convenient to local parks, schools, buzzing cafes, transport links and within a short drive to Cronulla's picturesque beaches.

- Open plan living area features raked ceilings and flows effortlessly outdoors
- Gourmet stone island kitchen boasts translucent splash

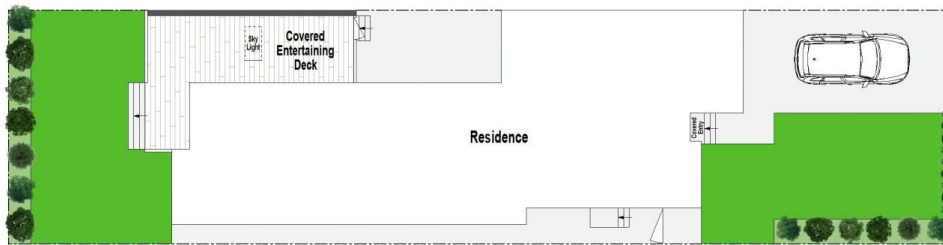
Price : For Sale
Land Size : 290 sqm
View : <https://www.gibsonpartners.com/sale/nsw/sutherland/woollooware/residential/semi-detached/7989336>



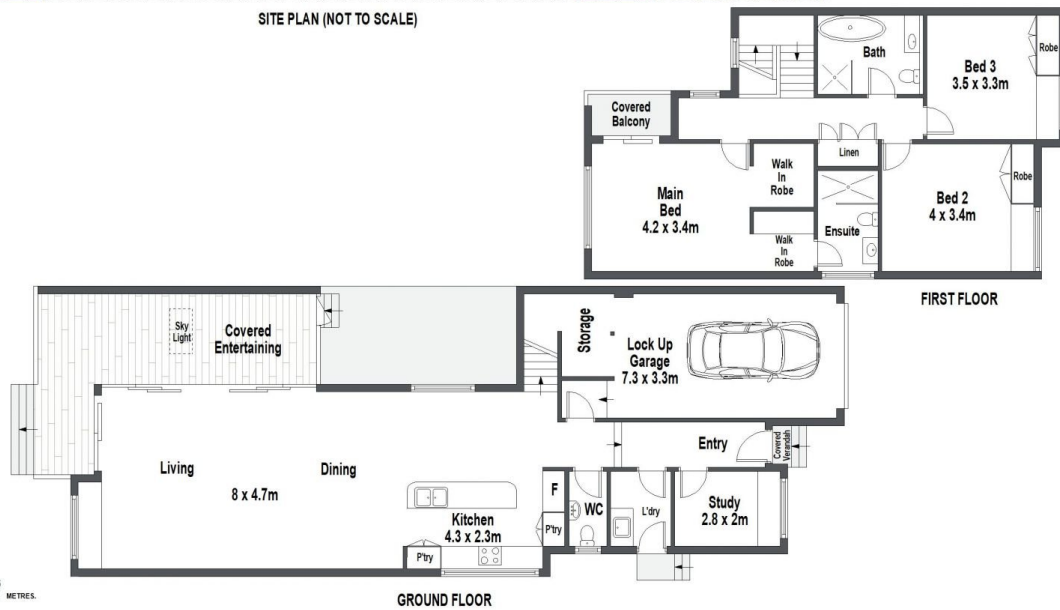
Ivan Lampret
02 9523 1333



Karla Madgwick
02 9523 1333



SITE PLAN (NOT TO SCALE)



Gibson Partners Real Estate Pty Ltd

FLOOR PLAN Scale in metres. Indicative only. Dimensions are approximate. All information contained herein is gathered from sources we believe to be reliable. However we cannot guarantee its accuracy and interested persons should rely on their own enquiries.

23B Dolans Road, Woollooware

GIBSON