



55 Pacific Street Caringbah South NSW

4 3 2

A much-loved family home long held by the one owner and now being offered to the market for the first time. Ideal for the growing family, this substantial home offers multiple living spaces, a sunny north facing rear yard with a sparkling inground swimming pool and ample accommodation. Presenting a fantastic opportunity to secure a great sized family home with scope for further personalisation in a highly sought-after locale.

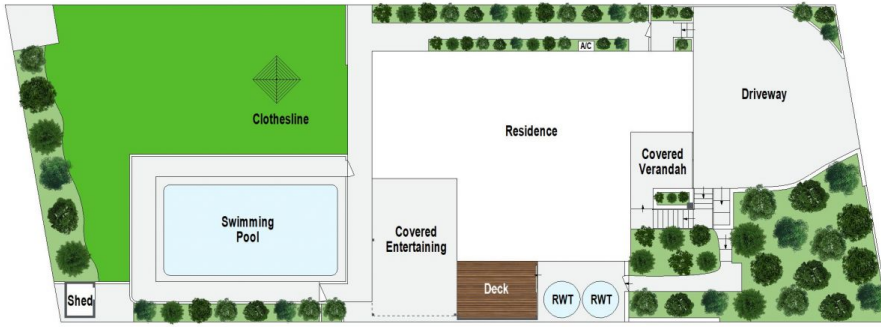
Enhancing its appeal is the easy walk to popular Laguna Street Primary School, Yowie Bay and Camelia Gardens and also conveniently located to nearby public bus transport, major supermarkets and Caringbah railway and business centre.

[For full version visit the website](#)

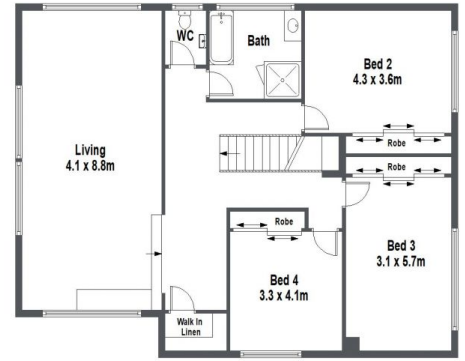
Type : House
Price : \$ 2,105,000
Land Size : 619.7 sqm
View : <https://www.gibsonpartners.com/sale/nsw/sutherland/caringbah-south/residential/house/8137838>



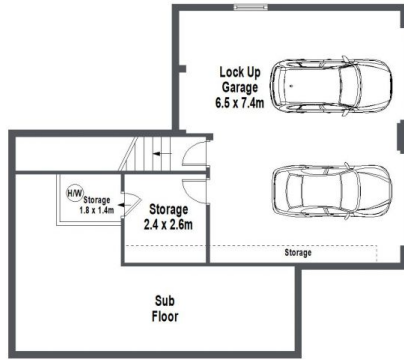
Suzanne Boylan
02 9523 1333



SITE PLAN (NOT TO SCALE)



FIRST FLOOR



LOWER GROUND FLOOR



GROUND FLOOR

0 1 2 3 4 5 METRES
Gibson Partners Real Estate Pty Ltd

FLOOR PLAN ON DEMAND Scale in metres. Indicative only. Dimensions are approximate. All information contained herein is gathered from sources we believe to be reliable. However we cannot guarantee its accuracy and interested persons should rely on their own enquiries.

55 Pacific Street, Caringbah South



GIBSON