



604/1 Foreshore Boulevard Woolooware NSW

2 2 1

Located on the sixth floor of the prestigious 'Sea' building within the Woolooware Bay development, this impeccably presented two-bedroom plus study apartment boasts a desirable north-east aspect. Showcasing a well-designed floor plan with modern finishes throughout, a spacious alfresco balcony and convenient lift access from the secure car space, the apartment effortlessly combines practicality and luxury.

Enhancing the quality of living and convenience is the proximity to 'Bay Central' containing major supermarkets, Cronulla's beaches and the unparalleled resort style facilities on offer including a stunning lagoon pool with barbecue area, the indulgent W Club featuring, lap pool,

Type : Apartment

View : <https://www.gibsonpartners.com/lease/nsw/sutherland/woolooware/residential/apartment/8215332>



Chris Malliate
02 9523 1333

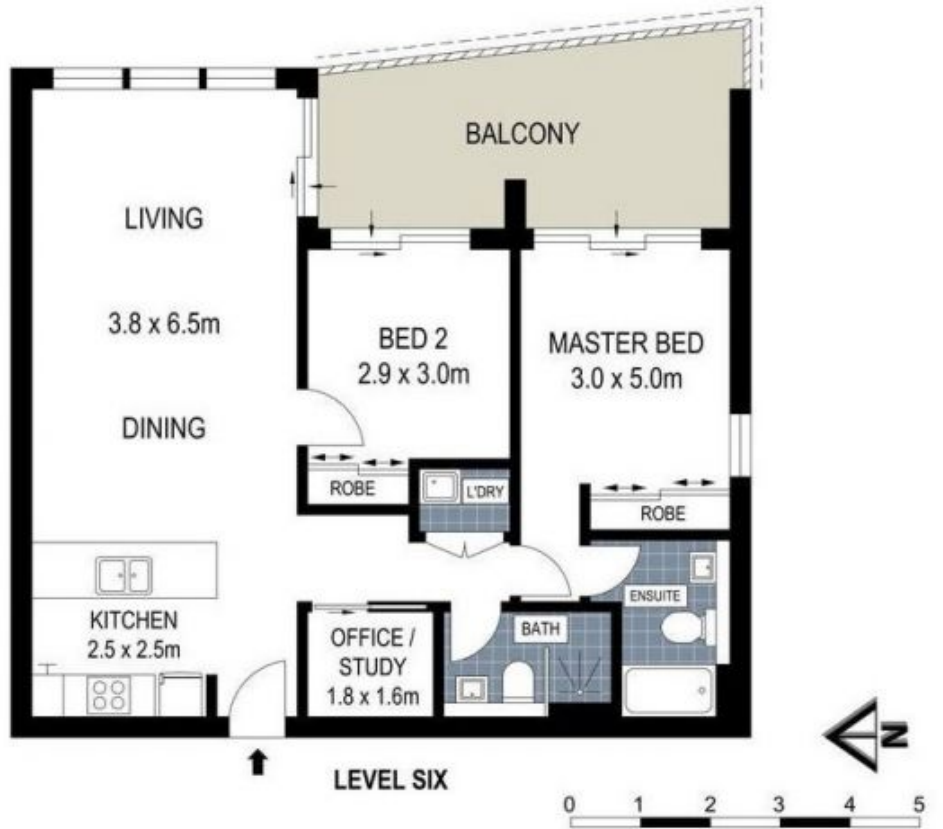


Victoria Kocanov
02 9523 1333

[For full version visit the website](#)



BASEMENT



DISCLAIMER: THIS IS FOR ILLUSTRATIVE PURPOSES ONLY, ALL DIMENSIONS ARE APPROXIMATE AND IT DOES NOT CONSTITUTE PART OF ANY LEGAL DOCUMENTS.