



1/16 Bulwarra Street Caringbah South NSW

4 2 2

Peaceful, inspiring and charming, this private brick duplex delivers a refined family lifestyle with generous house-like proportions, light-filled interiors and effortless indoor/outdoor connection to a tranquil rear garden with level lawn and paved entertaining terrace. Thoughtfully designed, the main bedroom is positioned on the lower level, catering to a range of life stages and family dynamics.

Ideally suited to a young family, professional couple or discerning downsizer, the home offers scope to personalise and rests within a quiet, leafy pocket of Caringbah South. Everyday convenience is on your doorstep, with bus transport only 200m (approx.) away and a level 850m stroll

[For full version visit the website](#)

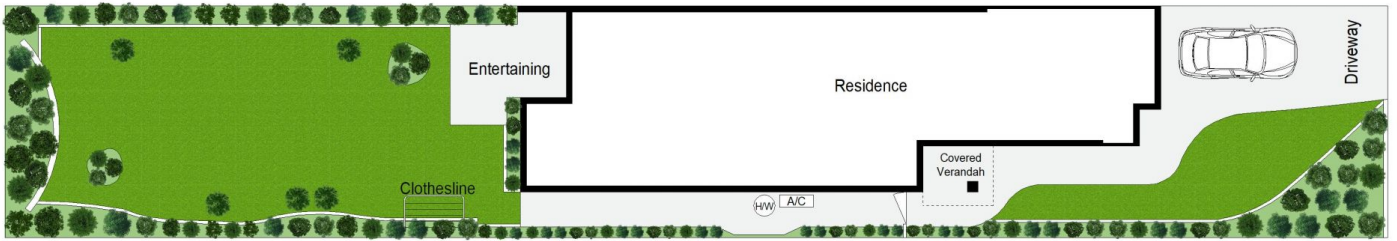
Type : Semi Detached
Price : \$ 1,860,000
Land Size : 331 sqm
View : <https://www.gibsonpartners.com/sale/nsw/utherland/caringbah-south/residential/semi-detached/8571868>



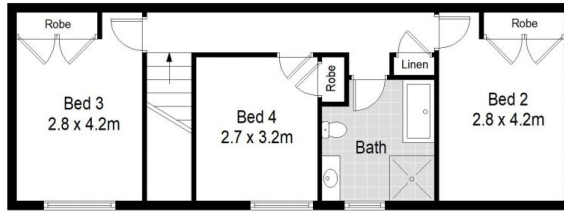
Ivan Lampret
02 9523 1333



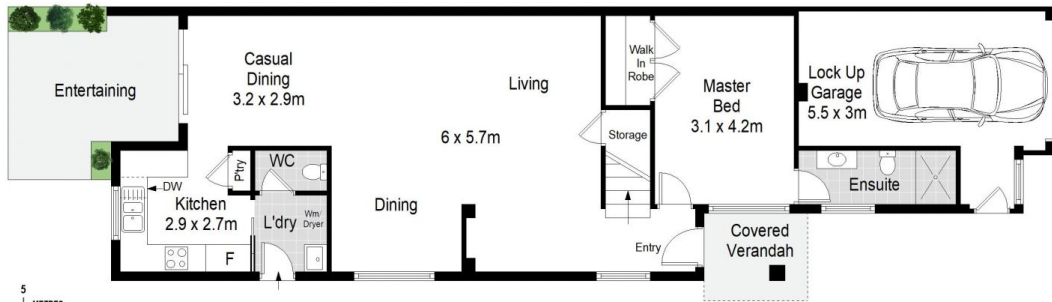
Karla Madgwick
02 9523 1333



SITE PLAN (NOT TO SCALE)



FIRST FLOOR



GROUND FLOOR

0 1 2 3 4 5 METRES.
Gibson Partners Real Estate Pty Ltd



FLOOR PLAN ON DEMAND Scale in metres. Indicative only. Dimensions are approximate. All information contained herein is gathered from sources we believe to be reliable. However we cannot guarantee its accuracy and interested persons should rely on their own enquiries.

1/16 Bulwarra Street, Caringbah South

GIBSON